



Figure 1: Site location and photo-points plan



Figure 2: View north-westward from within the site.

Camera: Canon EOS 1000D Camera
Image: Stitched photographs – focal length 18mm (wide angle)



Figure 3: View of the site from adjacent to the entrance on Kaitangata Highway

Camera: Canon EOS 1000D Camera
Image: Stitched photographs – focal length 50mm



Figure 4: View of the site from Kaitangata Highway close to the entrance to the farm shed

Camera: Canon EOS 1000D Camera
Image: Stitched photographs – focal length 50mm



Figure 5: View of the site from Kaitangata Highway near its eastern boundary

Camera: Canon EOS 1000D Camera
Image: Stitched photographs – focal length 50mm



Figure 6: View toward the site from Chicory Road

Camera: Canon EOS 1000D Camera
Image: Stitched photographs – focal length 50mm



Figure 7: View toward the site from the Balclutha Showgrounds

Camera: Canon EOS 1000D Camera
Image: Stitched photographs – focal length 50mm



Figure 8: View towards the site from the informal track adjacent to Balclutha Aerodrome

Camera: Canon EOS 1000D Camera
Image: Stitched photographs – focal length 50mm



Figure 9: View toward the site from the Balclutha Golf Course, near the end of Golfers Drive

Camera: Canon EOS 1000D Camera
Image: Stitched photographs – focal length 50mm



Figure 10: View toward the site from the Balclutha Golf Course, near the railway line

Camera: Canon EOS 1000D Camera
Image: Stitched photographs – focal length 50mm

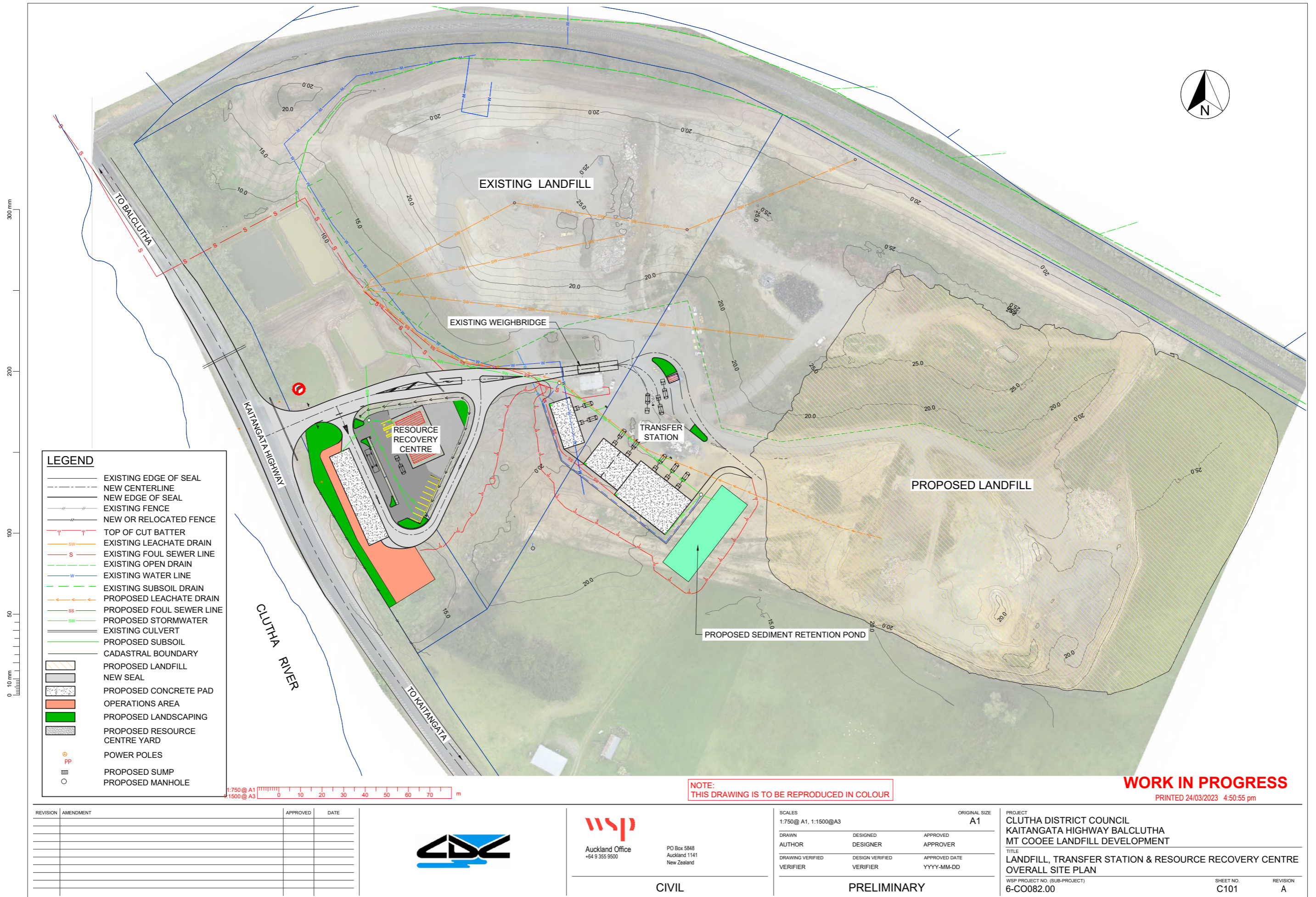
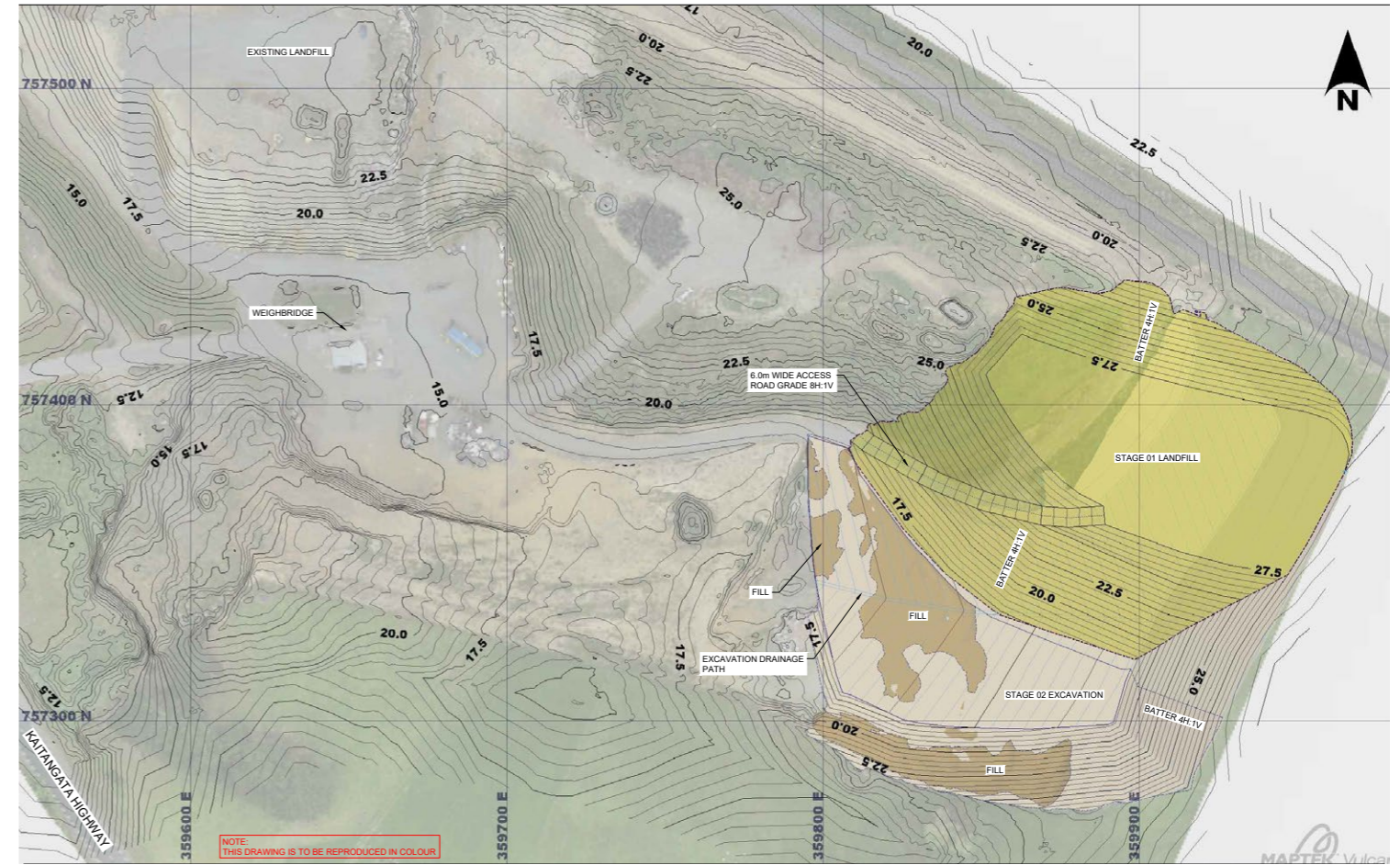


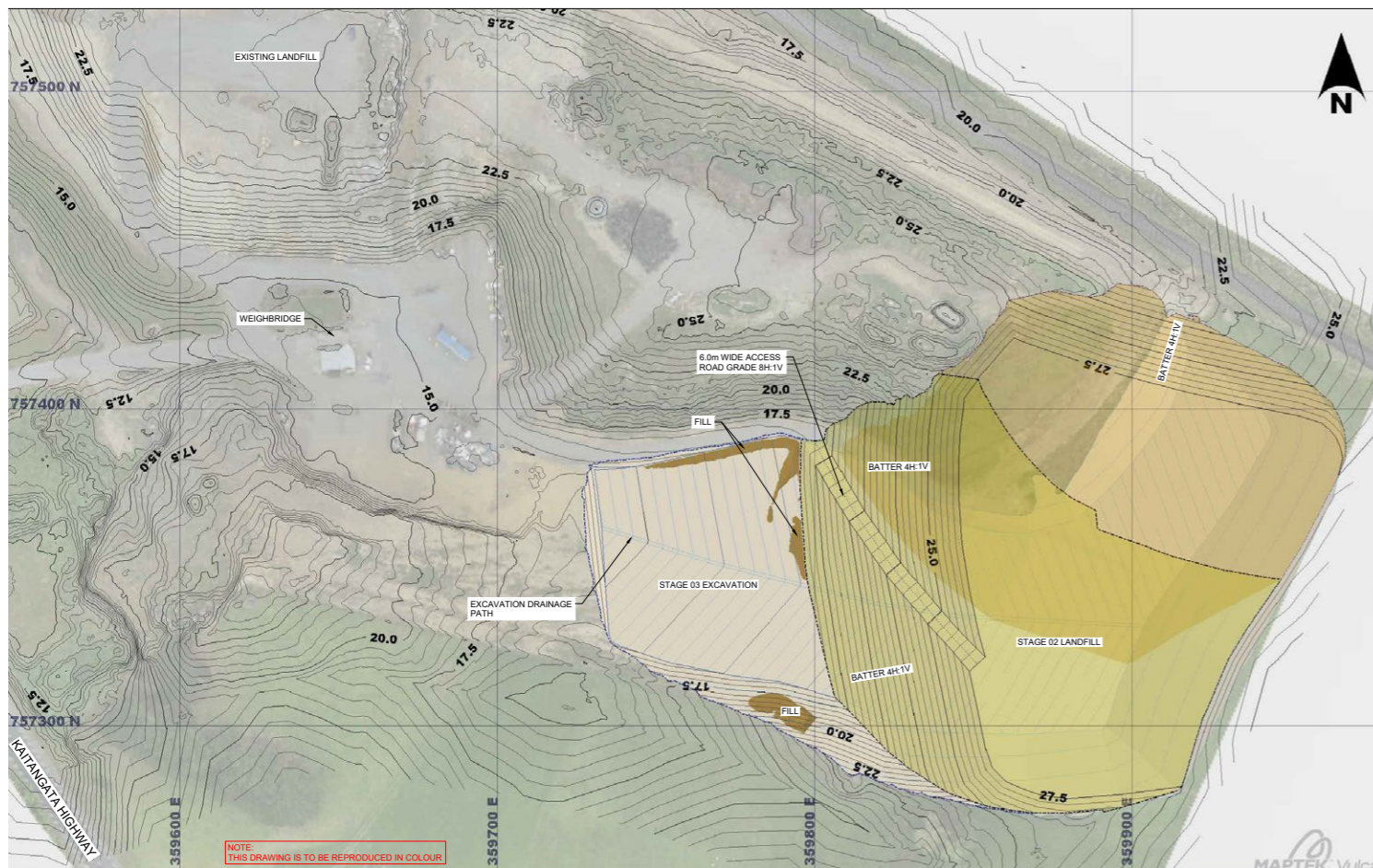
Figure 11: Proposed Expansion Plan – Mt Cooee Landfill



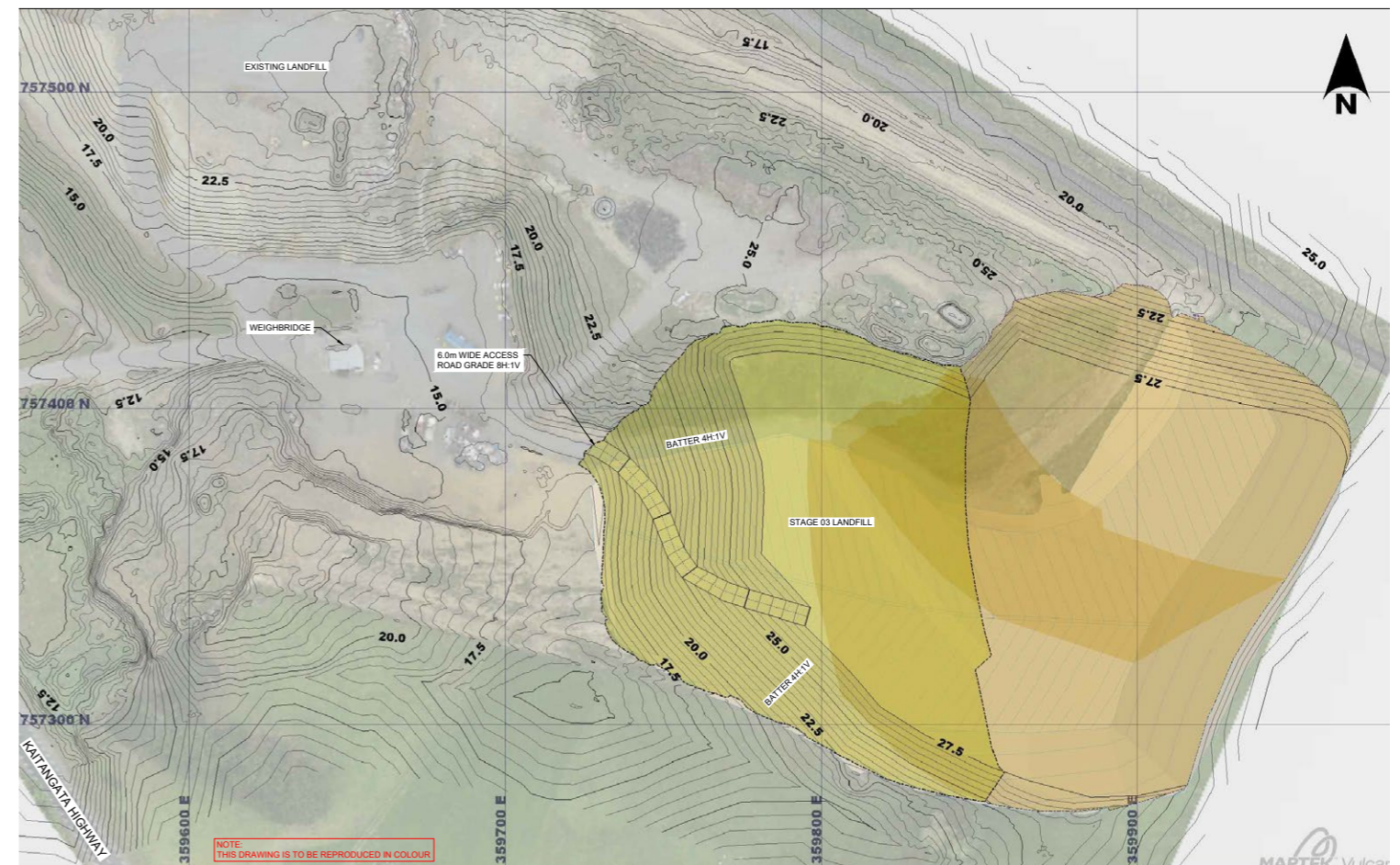
Stage 01 Floor Design



Landfill Stage 01 and Excavation Stage 02

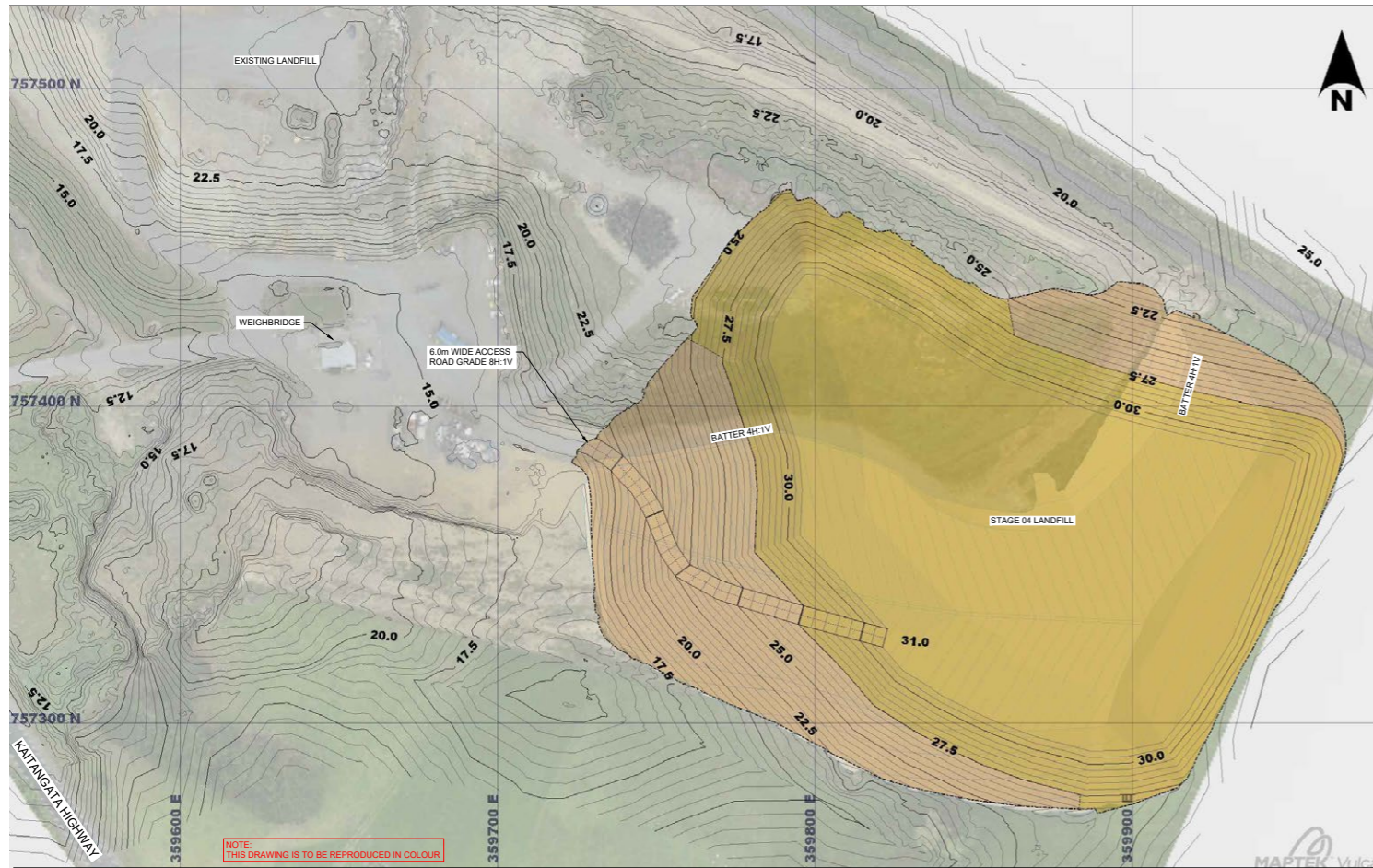


Landfill Stage 02 and Excavation Stage 03

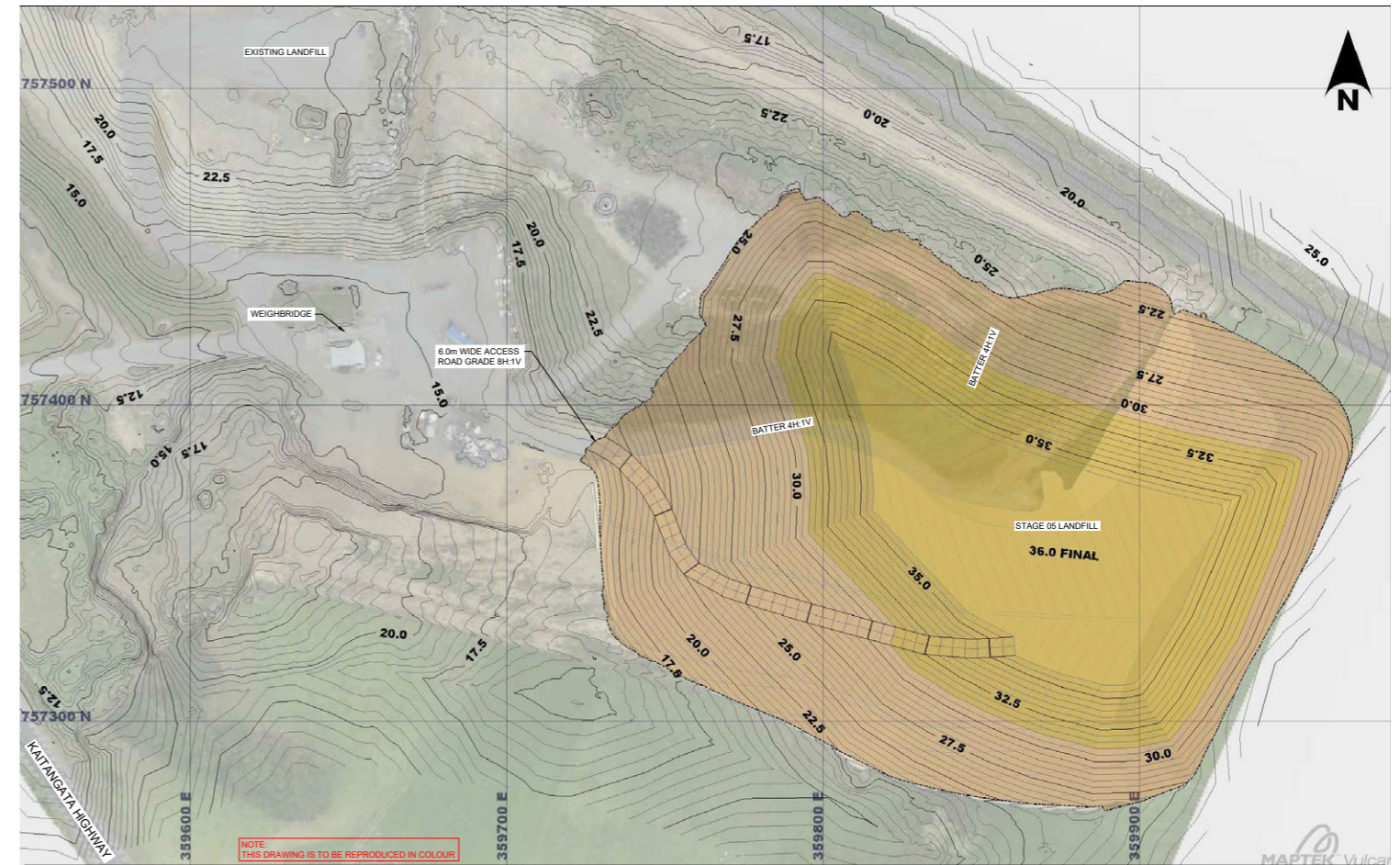


Landfill Stage 03

Figure 12(a): Proposed Landfill - Staging

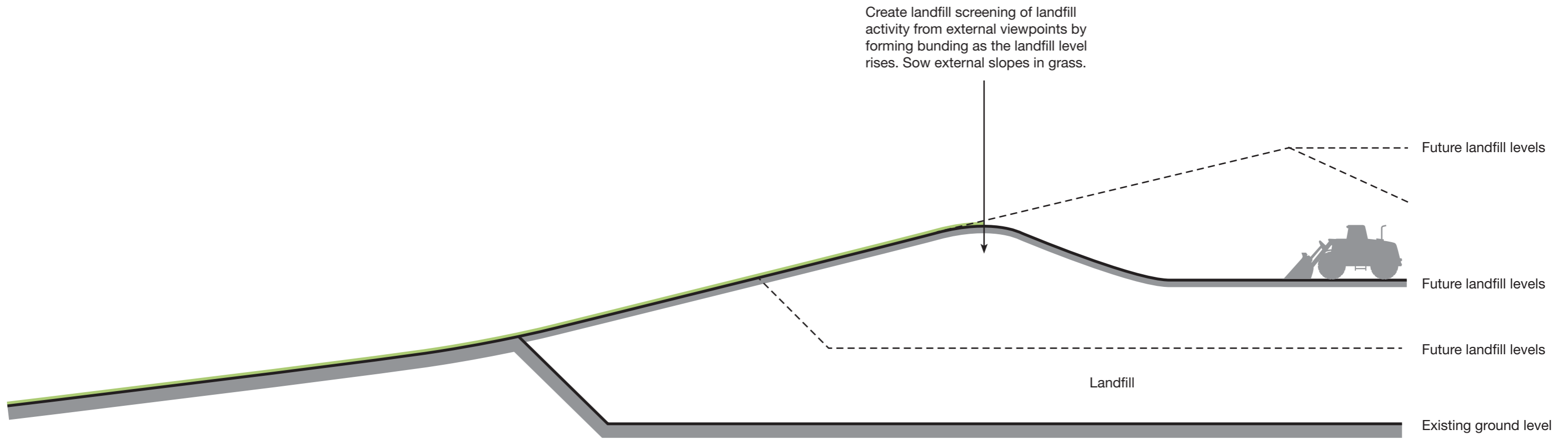


Landfill Stage 04



Landfill Stage 05

Figure 12(b): Proposed Landfill - Staging



**Figure 13: Proposed Landfill. Progressive landform screening concept
– Diagrammatic Cross Section**



Mature existing boundary trees provide an effective screen / buffer with neighbouring property. Retain space for boundary screen plantings should the existing trees be removed (10m).

Approx Scale 1:2000 (A3)

Figure 14

MIKE MOORE
Bsc, Dip LA, MRRP, ANZILA
 LANDSCAPE ARCHITECT
 PO Box 5076, Dunedin
 Tel (03) 479 0833 . Cell 0274 360 163
 Email mike@mmla.co.nz