

Kawarau gecko

Woodworthia "Cromwell"

Conservation status

Regional | At Risk: Declining
National | At Risk: Declining

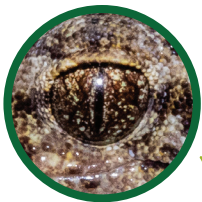
Main threats

Habitat change
(e.g. land development
and fire)

Introduced predators
(e.g. rodents, stoats,
ferrets and cats)



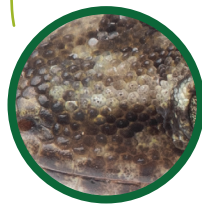
Identify me by my...



Pale-brown eyes



Grey or brown upper
surfaces with bands,
blotches or stripes
(sometimes speckles or spots)



Broad stripe
between the
nostrils and eyes



Body length: Up to 78 mm

Toe pads that
are broadest
near the middle

I inhabit...

Mostly rocky areas
(e.g. outcrops) and
occasionally trees, such
as tī kōuka/cabbage trees.



I eat...

Small invertebrates,
including insects and spiders

Possibly flower nectar and
native fruits when available

I look similar to...



Mountain beech gecko



Schist gecko



Southern Alps gecko