



## Ki uta ki tai (from the mountains to the sea) - the catchment and its estuary

Te Hakapupu / Pleasant River catchment covers 13,000 hectares between Waikouaiti and Palmerston in East Otago.

The waterways and estuary within it are important to mana whenua, Kāti Huirapa Rūnaka ki Puketeraki and the local community for many cultural and ecological reasons:

 Community access to nature, for wellbeing and spiritual connectivity

 Mahika kai – places to gather or grow food such as īnaka (whitebait), pātiki (flounder) and tuna (eels)

 Habitat for native plants and animals - spawning fish, nesting birds and wetland plants

 Ecosystem functions - filtering water, flood protection and erosion control.



Photo: patrickkavanagh

#### What is the project about?

Toitū Te Hakapupu aims to improve water quality and enhance conservation, cultural, and community values throughout the catchment.

#### Who is involved?

The project is a partnership between Otago Regional Council and Kāti Huirapa Rūnaka ki Puketeraki.

#### When is it happening?

The project is running from:  
**July 2021 - June 2025**

## Managing sediment within the catchment

Sediment in Te Hapakupu catchment waterways has been identified as an issue by Otago Regional Council. It is also important to Puketeraki and the local community.

Sediment comes from soil erosion being washed into waterways.

- Land use increases erosion but careful management can minimise its impact.
- Weather events such as heavy rain can increase erosion too.

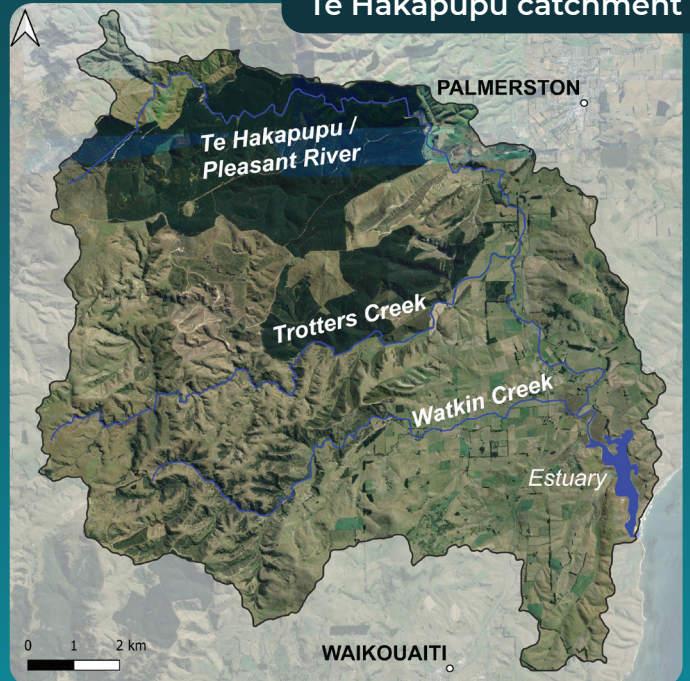
When these two factors combine, the impact on water quality and ecosystems can be far greater than either of these factors on their own.



**An improved understanding of water quality within the catchment will help guide action on the ground to reduce erosion and sedimentation.**

Photo: Henrik Moller

Te Hapakupu catchment



## How can we monitor sediment and water quality?

Science-based monitoring of the catchment's waterways gives us valuable information about sediment levels, water quality and ecosystem health, for example:

- Baseline information - the starting point!
- The impact of weather events or other changes in the catchment.
- Changes over time to show water quality is improving.

A partnership project by:



In collaboration with:



Find out more at: [www.orc.govt.nz/toitutehakapupu](http://www.orc.govt.nz/toitutehakapupu)