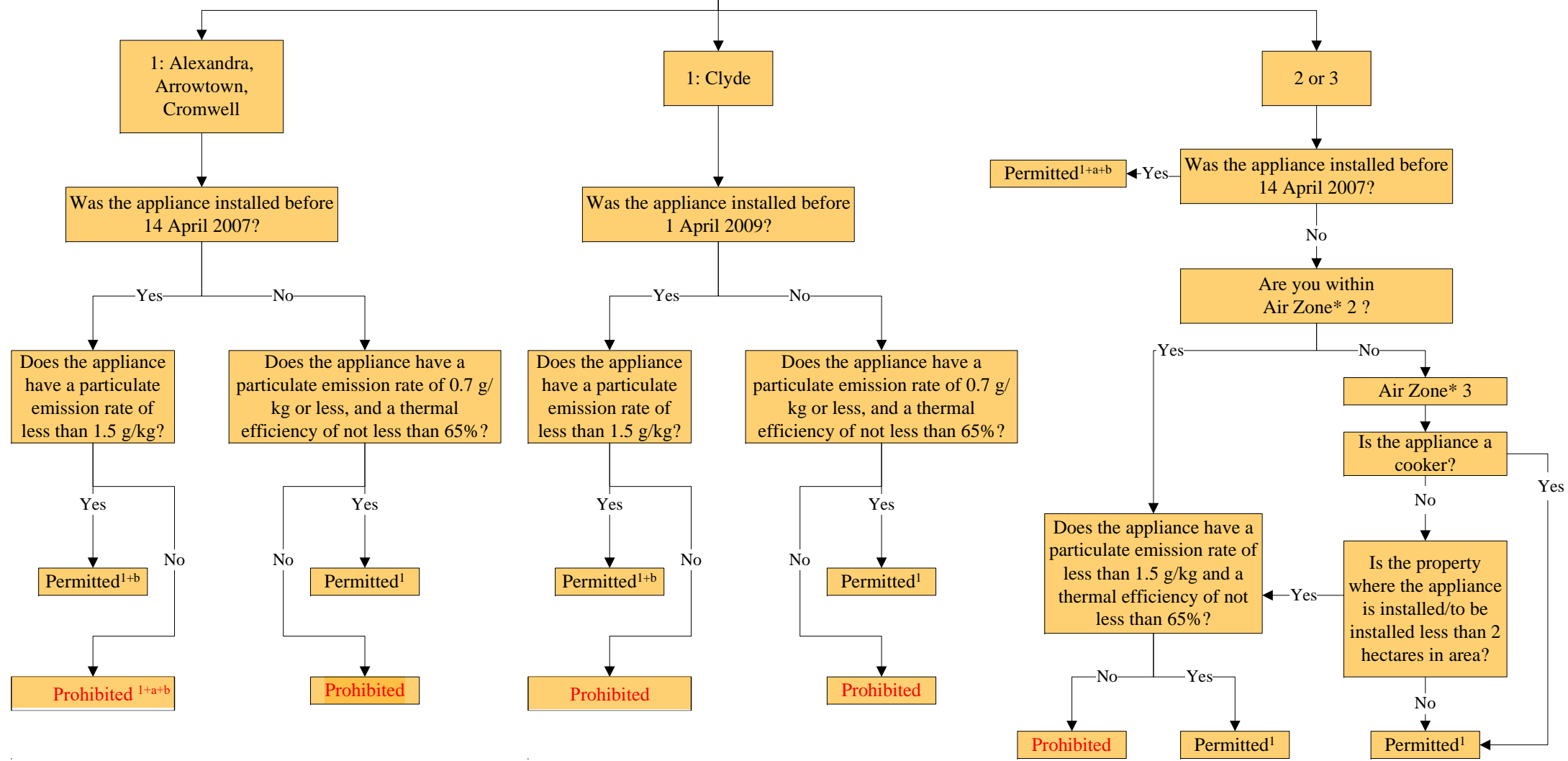


Guide to the rules for discharges from domestic heating appliances in Otago

1: Alexandra, Arrowtown, Clyde, Cromwell

What Air Zone* are you in?

2: Balclutha, Central Dunedin, Green Island, Hawea, Kingston, Milton, Mosgiel, Naseby, North Dunedin, Oamaru, Palmerston, Port Chalmers, Queenstown, Ranfurly, Roxburgh, South Dunedin, Waikouaiti, Wanaka
3: Rest of Otago



Notes

- *Plan Change 2 to the Regional Plan: Air for Otago became operative on 1 January 2009. It introduced Air Zone areas, which are available to download from the ORC website. Alternatively, you can obtain a copy by phone or email.
- ¹Providing the domestic heating appliance was lawfully installed (with a building permit) and any discharge of smoke, odour, particulate matter or gas is not noxious, dangerous, offensive or objectionable at or beyond the boundary of the property.
^aDomestic heating appliances (excluding open fires) installed in Schedule 1.2 areas between 28 February 1998 and 14 April 2007 were required to meet a particulate emission rate of 4 g/kg or less; and
^bWoodburners installed after 1 September 2005, in a building on a property with an allotment size of less than 2 hectares were required to meet a particulate emission rate of less than 1.5 g/kg and have a thermal efficiency of not less than 65%.
- *Definition of Domestic Heating Appliance:* A combustion appliance, with a heat generation capacity of up to 50 kW in which solid fuel is burnt for heating or cooking, and is primarily used in residential dwellings. It includes, but is not limited to, any open fire, woodburner, multifuel, pellet or coal burning heater, or cooker including coal range.
- *Definition of Cooker:* Any domestic heating appliance which has an inbuilt oven and is used for cooking.
- *Definition of Woodburner:* Means a domestic heating appliance that burns wood but does not include: an open fire; a multifuel heater, a pellet heater, or a coal burning heater; a stove that is designed and used for cooking, and heated by burning wood.
- If you want to install a domestic heating appliance, see the flow chart "Guide to what domestic heating appliances you can install in Otago" on this website, or obtain a copy by phone or email.
- Certain commercial premises and recognised heritage buildings may be able to apply for resource consent to install a non-complying domestic heating appliance. See the Regional Plan: Air for Otago for more detail.