

Appendix 16: Consultation and Engagement Collateral

Waste Futures Engagement Collateral

The future of rubbish and recycling in Dunedin
Ka aha ki te para me te tukurua ki Ōtepoti

HAVE YOUR SAY ON KERBSIDE COLLECTION

12 March – 24 April
www.dunedin.govt.nz/kerbside-collection

DUNEDIN
CITY COUNCIL
Te Kaitiaki Take Kōwhiri

THE BIG PICTURE TE TIROHANGA WHĀNUI

Global	National	Local
Global movement to cut carbon emissions and reduce the amount of waste that goes to landfill	National direction as set out by the Ministry for the Environment as well as towards a net-zero economy supported by waste management	Dunedin is a council committed to zero waste and is reducing Dunedin's net carbon emissions to zero by 2030

In Dunedin and around the world, we need to do a much better job of dealing with rubbish which we generate. Te Kaitiaki Take Kōwhiri has committed to being part of a national land-use plan to cut carbon emissions instead of the amount of waste that goes to landfill.

A segment of this is working out what rubbish and recycling we should pick up from roads to you at home. Many councils have been choosing to pay for these services with an extra charge on your household rate. We don't want to be like that. We want to be like the councils that don't charge for these services.

We need your feedback to help us to do this. We need to know what you think about the different options we can do. How do you think the different options will work for you?

FIND OUT MORE
www.dunedin.govt.nz/waste-futures

WHAT WE PROVIDE NOW Ā MĀTOU RATONGA Ō NĀIANEI

Rubbish collection in urban areas and rural townships
Curbside refuse pickup for residential collection in rural areas

- Weekly rubbish collection
- fortnightly glass and metal
- fortnightly mixed recycling (not two stream bin)



Curbside
This is a different service for people living in the suburbs. They can use public rubbish bags placed on their property. They don't have to take recycling, but there are some residential recycling materials.

Rural residents outside of townships
Rural residents drop off their rubbish at a transfer station. They don't have kerbside recycling, but currently there are refuse landfills in rural areas. If you do, you will continue to be able to take your waste to a transfer station for recycling.

POSSIBLE CHANGES TAUNGA PANOHANGA

We need a variety of DCC blue waste bins. They are heavy and safety risk for our collectors and for many heavy items plastic bags ensure they are not for the environment.

The existing recycling system works well. We have good options for separating parts from other things like plastic cans and cases which make it easier to separate the things we can't do in our household bins. It's important to have a way to separate things like metal cans and cases which we can't do in our household bins. We have good options for separating parts from other things like plastic cans and cases which make it easier to separate the things we can't do in our household bins.

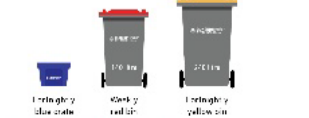
Curbside city residents
If we don't want to do this we plan to provide you with a new DCC service to be able to be provided to your property. We're talking to you now about how we can make better use of what you have now instead of this.

Goals
People who notice the 100 steps on services for this service their own. People who notice of their rubbish if a range of services is provided for their rubbish or other materials (or going to the landfill). All of these options have a goal which is to separate things like plastic cans and cases which we can't do in our household bins. We have good options for separating parts from other things like plastic cans and cases which make it easier to separate the things we can't do in our household bins.

DID YOU KNOW?
The new curbside service is provided by the 100 steps on 10% of the curbside service in the Green Island Landfill. The rest of the curbside service is provided by the 100 steps on 10% of the curbside service in the Green Island Landfill.

IDEA 1 - THREE BINS*

Reduce 100 percent of the rubbish bags with a red lid of rubbish which is collected for recycling. Add a green lid bin for household garden waste which is collected for recycling. The curbside service is provided by the 100 steps on 10% of the curbside service in the Green Island Landfill.



IDEA 2 - FOUR BINS*

Reduce 100 percent of the rubbish bags with a red lid of rubbish which is collected for recycling. Add a green lid bin for household garden waste which is collected for recycling. The curbside service is provided by the 100 steps on 10% of the curbside service in the Green Island Landfill.



WASTE FUTURES KO TE ĀPOPO, HE PARAKORE

The aim of Waste Futures is to improve Dunedin's waste system. It's about what we collect, what we recycle in our area, and what has to go to landfill. It's about how we can reduce our impact on the environment, help us to be like the councils that don't charge for these services.



FIND OUT MORE
www.dunedin.govt.nz/waste-futures

WASTE FUTURES KO TE ĀPOPO, HE PARAKORE

There are three key things we're working on as part of Waste Futures. These are:

- Kerbside rubbish and recycling collection**
This is what we're talking to you about now. We'll be giving you more information about this in the next few weeks.
- Reducing our waste goals**
The city is required to have a plan that sets both the direction and the targets for managing our waste and energy use. The plan is based on the goals set out in the Waste Management and Planning Plans, after review we will check out the plan at 2020-21. A final Plan for more information.
- Green Island Landfill**
The landfill will close sometime after 2023, so we're in the process of planning for a new landfill at some point in the future. More information on this will be in the next few weeks.

DID YOU KNOW?
The kerbside rubbish and recycling collection is the plan by our city. It's about how we can reduce our impact on the environment, help us to be like the councils that don't charge for these services.

KERBSIDE FAQS PATAI AUAU

- What happens next?**
The Council will consider your feedback and come up with some options. We're holding meetings at this stage. We'll be holding the public consultation in the next few weeks. We'll be holding the public consultation in the next few weeks.
- When would you see the changes?**
We're talking to you about this in the next few weeks. We'll be holding the public consultation in the next few weeks.
- How will these changes be paid for?**
This is still to be decided, but at this stage, any new options will be funded by ratepayers. We'll be holding the public consultation in the next few weeks.

KEY DATES

- March / April: Have your say on kerbside service
- Mid 2022: Council considers your feedback and ideas
- Late 2022: Dunedin sets the new waste goals
- March 2023: Final consultation on kerbside service
- June 2023: Open consultation on kerbside service
- 2022: Council sets the new waste goals

HAVING YOUR SAY IS EASY KŌREROHIA MAI

We've made it as easy as possible for you to have your say on kerbside service. We've made it as easy as possible for you to have your say on kerbside service.

- ONLINE**
Go to www.dunedin.govt.nz/waste-futures to have your say on kerbside service.
- WRITTEN FEEDBACK**
Write to us at feedback@cityofdunedin.govt.nz.
- TALK WITH STAFF AND COUNCILLORS**
Staff at City Council will be available to talk to you about kerbside service.
- REMEMBER**
We're holding the public consultation from 12 March to 24 April 2022.

FEEDBACK FORM TE WHAKAKOHI KŌRERO

Contact details
Name: _____
Department (if applicable): _____
Do you prefer: Online (30 min) In person (1 hour)

Any comments on these ideas? _____

We'll be holding the public consultation in the next few weeks. We'll be holding the public consultation in the next few weeks.

Thank you for sharing your views on kerbside service.

WASTE FUTURES



Planning for the future of GREEN ISLAND LANDFILL



GREEN ISLAND LANDFILL SITE: TODAY



WHAT'S PLANNED AND WHY?

As part of our Waste Futures programme of projects and Dunedin's wider commitment to reducing carbon emissions and reducing waste going to landfill, we will be making changes to the use of Green Island landfill site in the coming years.

These changes include:

- Staged closure of the landfill itself over the next six years based on current waste disposal rates
- A new state-of-the-art resource recovery park to support a new kerbside collection service for the city

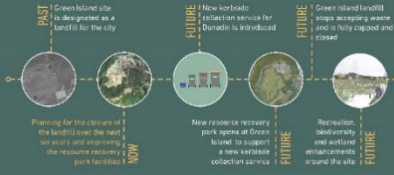


A NEW KERBSIDE COLLECTION SERVICE FOR DUNEDIN



We talked to you about the new kerbside collection service in April 2020.

WHAT ARE WE DOING NOW?



WASTE FUTURES



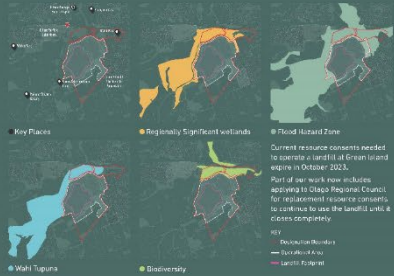
Planning for the future of GREEN ISLAND LANDFILL



GREEN ISLAND LANDFILL SITE: AT CLOSURE

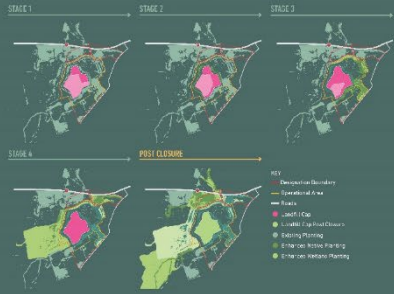


PLANNING CONTEXT



STAGED CLOSURE

Based on Dunedin's current waste disposal rates, we expect that the Green Island landfill can keep taking our city's waste until about 2025. Between now and then, until we continue to fill up the landfill, it will be closed and capped in stages. All waste will continue to be placed in the existing landfill footprint.



WASTE FUTURES



Planning for the future of GREEN ISLAND LANDFILL



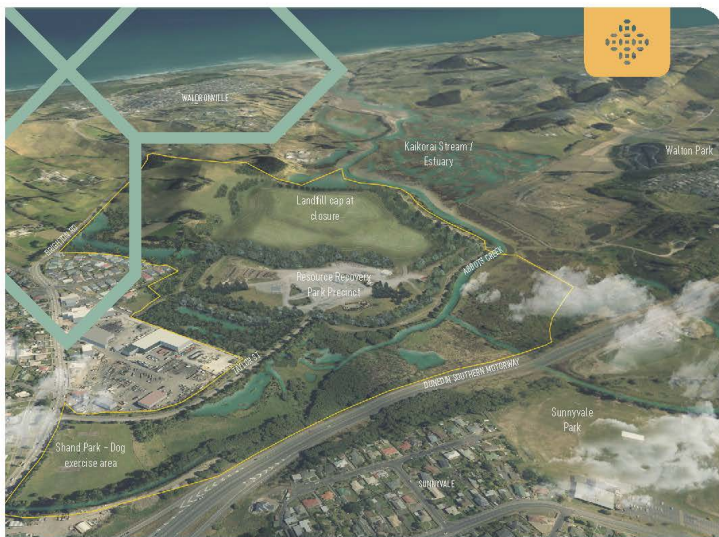
GREEN ISLAND LANDFILL SITE: POST CLOSURE



FUTURE OPPORTUNITIES

When the landfill closes, opportunities could open up for public recreational use in the area around it. Examples could be walking and biking tracks beside the Kākara Estuary. Below are some ideas of possible recreational and environmental enhancements for the Green Island landfill site. We'll talk to you more about these opportunities in the future.

<p>CURRENT</p>	<p>WHAT IT COULD BE</p>	<p>EDUCATION</p> <p>Interpretation and activities to tell people more about the history of the site and the wider environment, its use as a landfill and recycling facility, and how it has changed over time.</p>
		<p>ENVIRONMENT</p> <p>Enhance the environment to improve the safety, flora and fauna and adding to the ecological values of the Wahi Tupuna - Kākara Estuary (Dunedin).</p>
		<p>WALKING AND CYCLING</p> <p>Connect local communities through new paths and tracks around the edge of the landfill site, to the Kākara Estuary and the coast.</p>
		<p>RECREATION</p> <p>Providing more opportunities for recreation around the site, enhancing surrounding park facilities.</p>



THE FUTURE OF GREEN ISLAND LANDFILL

Online information sessions

www.dunedin.govt.nz/waste-futures

DUNEDIN CITY COUNCIL | **kaunihera** a-rohe o **Ōtepoti**

WHAT'S PLANNED FOR GREEN ISLAND LANDFILL?

As you live near Green Island landfill, we'd like to tell you first about what is planned for the site over the coming years. The plans are part of our city's commitment to reducing carbon emissions and reducing waste going to landfill. Projects include:



State-of-the art resource recovery park at the Green Island landfill to support a new kerbside bin collection service for the city



Staged closure of the landfill itself over the coming years

You're invited to join one of our online information sessions:

- **12 noon, Thursday, 23 February**
- **7pm, Thursday, 23 February**
- **7pm, Wednesday, 1 March**

To register for a session, please email us at least a day before the session you wish to attend at: wastefutures@dcc.govt.nz

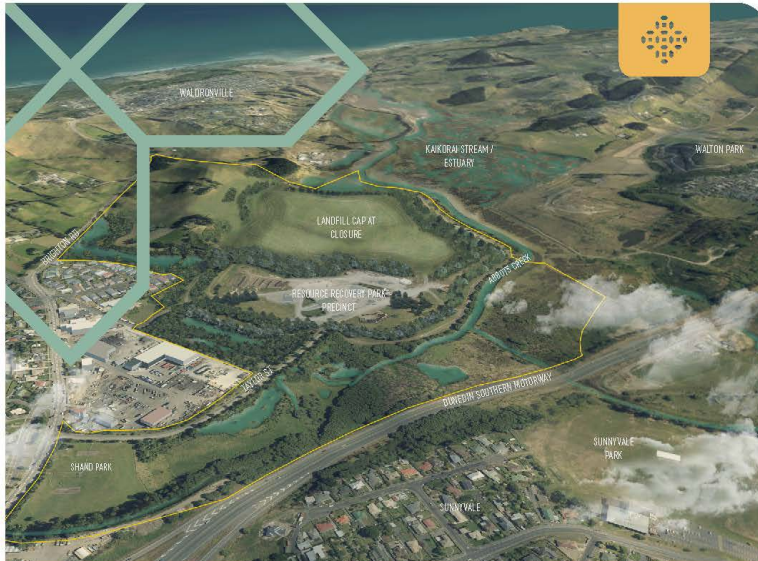
This is a great opportunity to hear about the DCC's wider Waste Futures programme of projects, meet our team and ask questions.

Also, look out for pop-up information displays around the Green Island community in coming weeks.

FIND OUT MORE



www.dunedin.govt.nz/waste-futures



THE FUTURE OF GREEN ISLAND LANDFILL

Find out what's planned

www.dunedin.govt.nz/waste-futures



WHAT'S PLANNED FOR GREEN ISLAND LANDFILL?

As part of our Waste Futures programme of projects and Dunedin's wider commitment to reducing carbon emissions and reducing waste going to landfill, we will be making changes to the use of Green Island landfill site in coming years.

Staged closure of the landfill

Based on Dunedin's current waste disposal rates, we expect that the Green Island landfill can keep taking our city's waste until about 2029. Between now and then, and as it continues to fill up, the landfill will be closed and capped in stages.



Green Island landfill site: opportunities post closure

As current Otago Regional Council resource consents needed to operate a landfill at Green Island expire in October 2023, we are applying for replacement consents to continue to use the landfill until it closes completely.

A new resource recovery park

A state-of-the-art resource recovery park to support a new kerbside bin collection service for the city is also planned for the site. Improvements will include new facilities to better process recyclable material and the kitchen and garden waste collected in the new bins.

Future opportunities

After the landfill has closed, opportunities could open up for recreational and environmental improvements in the area around it. Examples could include new public walking and biking tracks beside the Kaikorai Estuary. We'll talk to you more about these ideas in the future.

FIND OUT MORE



www.dunedin.govt.nz/waste-futures