

Schist gecko

Woodworthia "Central Otago"

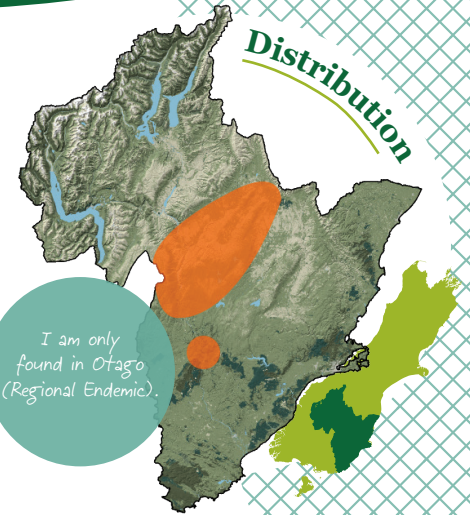
Conservation status

Regional | At Risk: Declining
National | At Risk: Declining

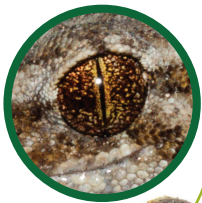
Main threats

Habitat change
(e.g. land development,
intensive farming and fire)

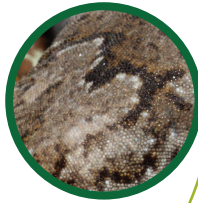
Introduced predators
(e.g. rodents, stoats,
ferrets, weasels,
hedgehogs and cats)



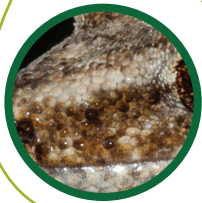
Identify me by my...



Typically yellow eyes



Grey or brown upper surfaces with bands, blotches or stripes (sometimes speckles or spots)



Narrow (or no) stripe between eyes and nostrils



Body length: up to 71 mm



Toe pads that are broadest near the middle

I inhabit...

Schist rock habitat and live among small native shrubs (e.g. *Coprosma propinqua*) or dense vines (*Muehlenbeckia complexa*).

I eat...

Mostly small invertebrates, including insects and spiders
Possibly flower nectar and native fruits when available



I look similar to...



Kawarau gecko



Kōrero gecko



Raggedy Range gecko



Southern Alps gecko