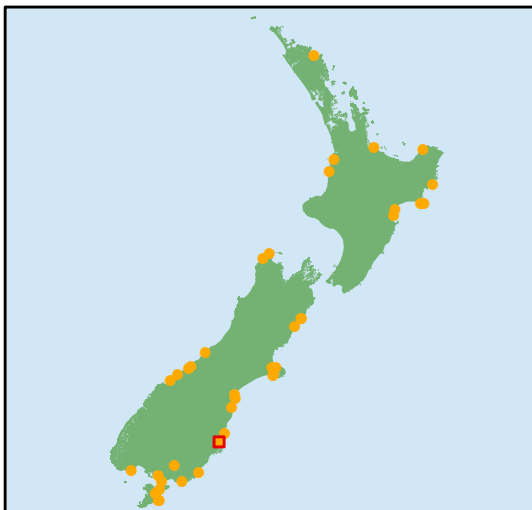
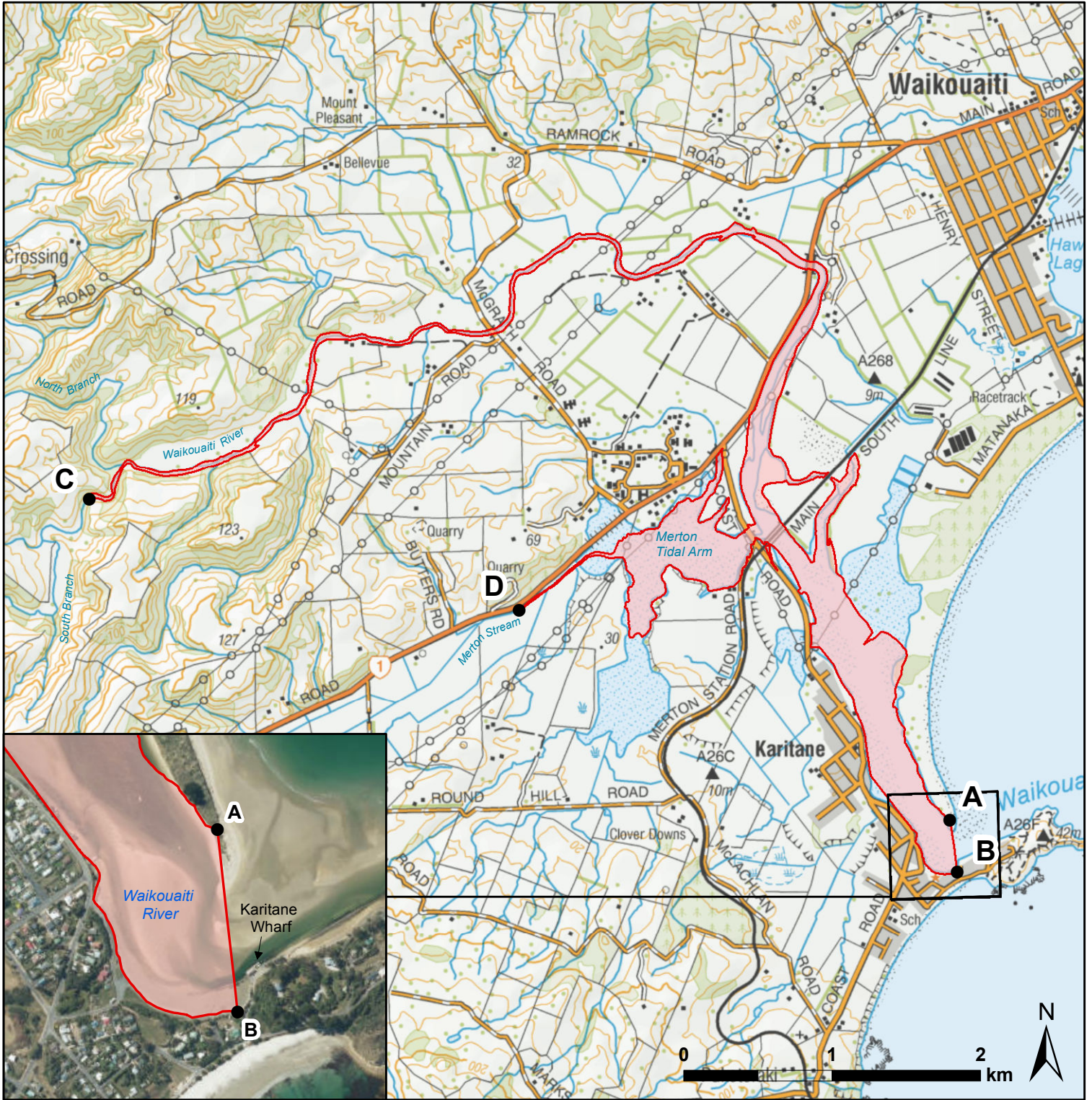


# Waikouaiti Mātaitai Reserve



- Mātaitai Reserve boundary
- Mātaitai Reserve coordinates
- Other Mātaitai Reserve locations

**Coordinates**  
**A:** 45°38.32'S 170°39.67'E  
**B:** 45°38.51'S 170°39.70'E  
**C:** 45°37.06'S 170°35.26'E  
**D:** 45°37.51'S 170°37.47'E

Ref: 160297  
 Date: 11 July 2016  
 Map Projection: NZTM 2000  
 Coordinates Stated In: WGS84 (Lat/Long)  
 Produced by: Spatial Analysis Solutions

**Ministry for Primary Industries**  
 Manatū Ahu Matua



Disclaimer: This map and all information accompanying it (the "Map") is intended to be used as a guide only, in conjunction with other data sources and methods, and should only be used for the purpose for which it was developed. The information shown in this Map is based on a summary of data obtained from various sources. While all reasonable measures have been taken to ensure the accuracy of the Map, MPI: (a) gives no warranty or representation in relation to the accuracy, completeness, reliability or fitness for purpose of the Map; and (b) accepts no liability whatsoever in relation to any loss, damage or other costs relating to any person's use of the Map, including but not limited to any compilations, derivative works or modifications of the Map. Crown copyright ©. Some data sourced from Land Information New Zealand.