

Land & Water Regional Plan for Otago

Community consultation on
environmental outcomes and
actions



CATLINS
25 October 2022



Meeting outline

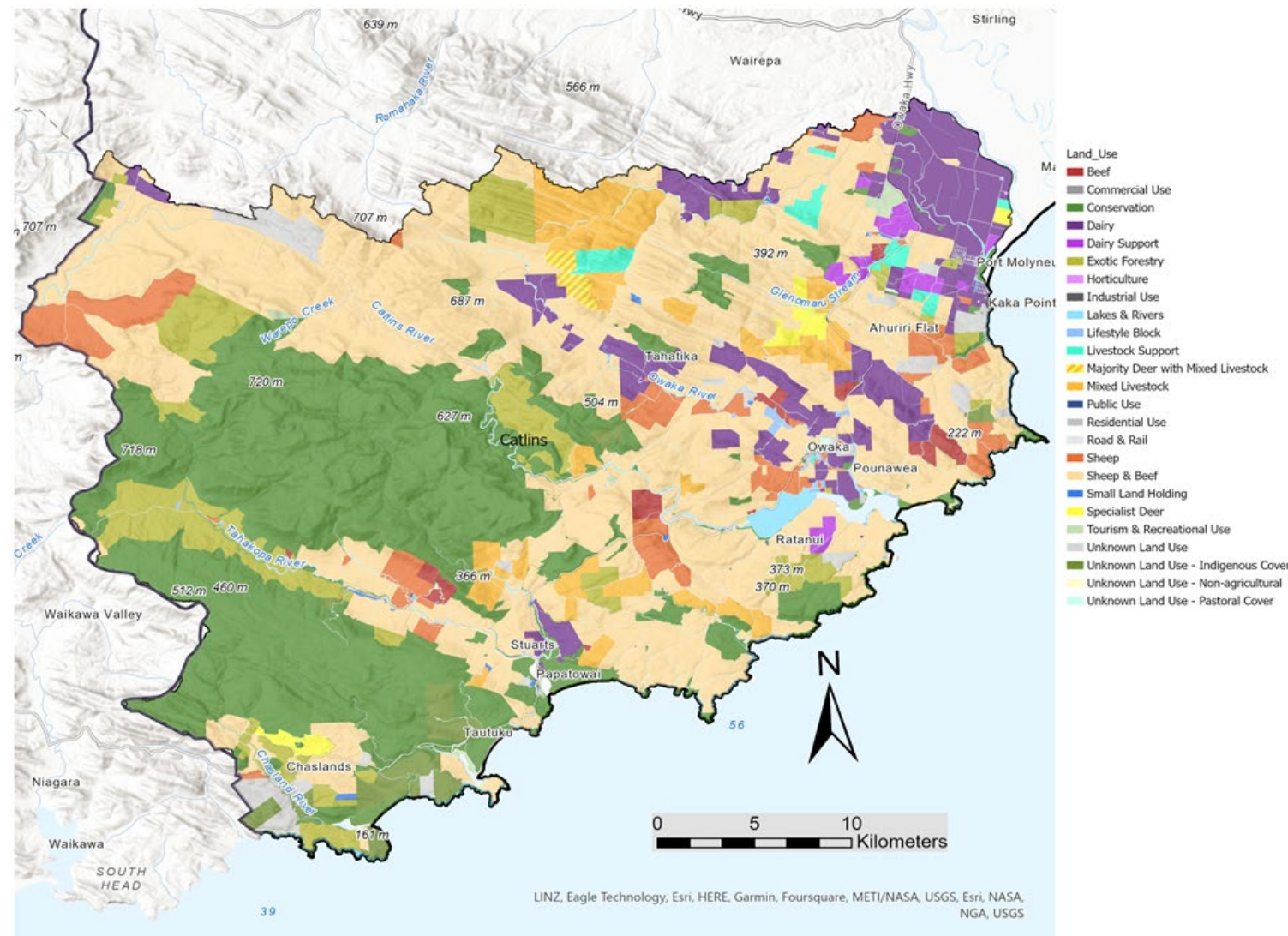
- ▶ Presentation – the current state of your area, developing a regional plan
- ▶ Group discussions on possible environmental outcomes
- ▶ Group discussions on types of actions that could work in the Catlins

The Catlins



Overview of land uses

- ▶ Intensification in last 30 years
- ▶ Some conversion from Sheep and Beef to Dairy
- ▶ Net loss of indigenous forest cover



Water quality

- ▶ ORC monitors Catlins, Owaka ,
Maclennan and Tahakopa Rivers
- ▶ Suspended fine sediment and *E. coli* results do not meet national bottom line at the Owaka and Tahakopa sites.
- ▶ Trend analysis results mixed, long term degrading water quality

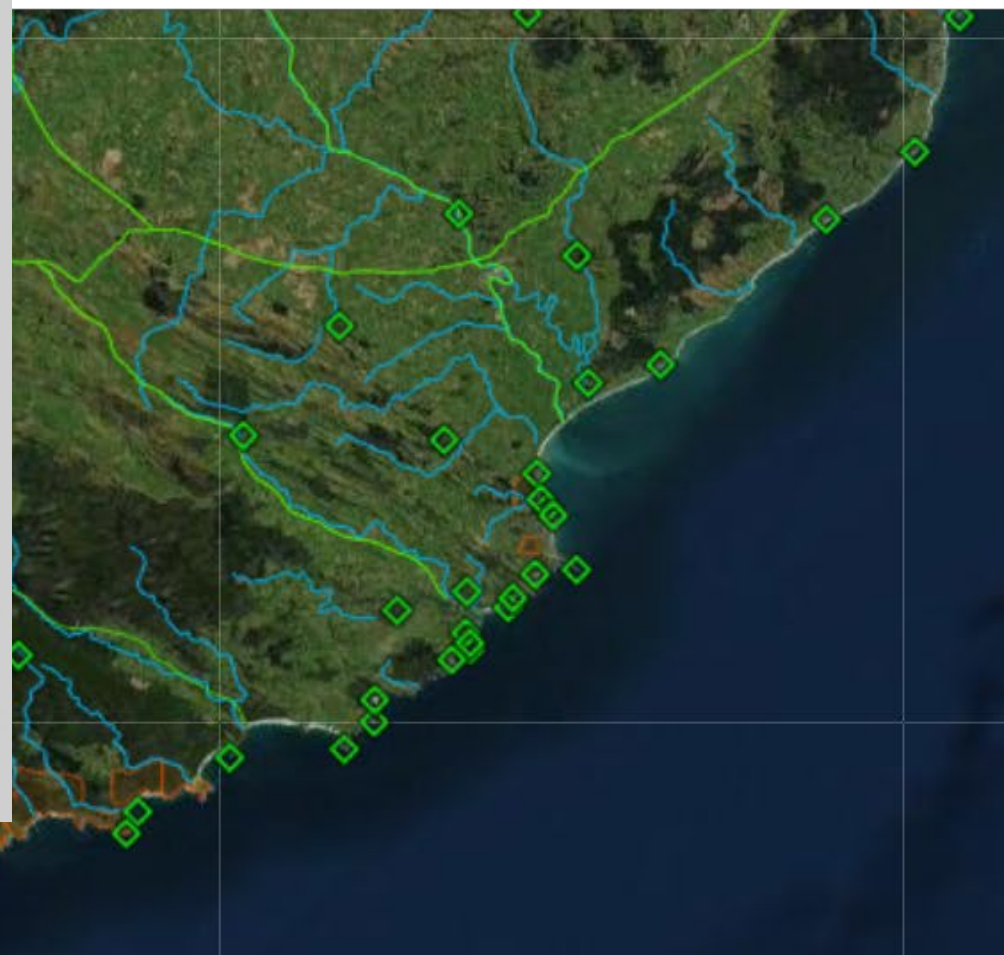
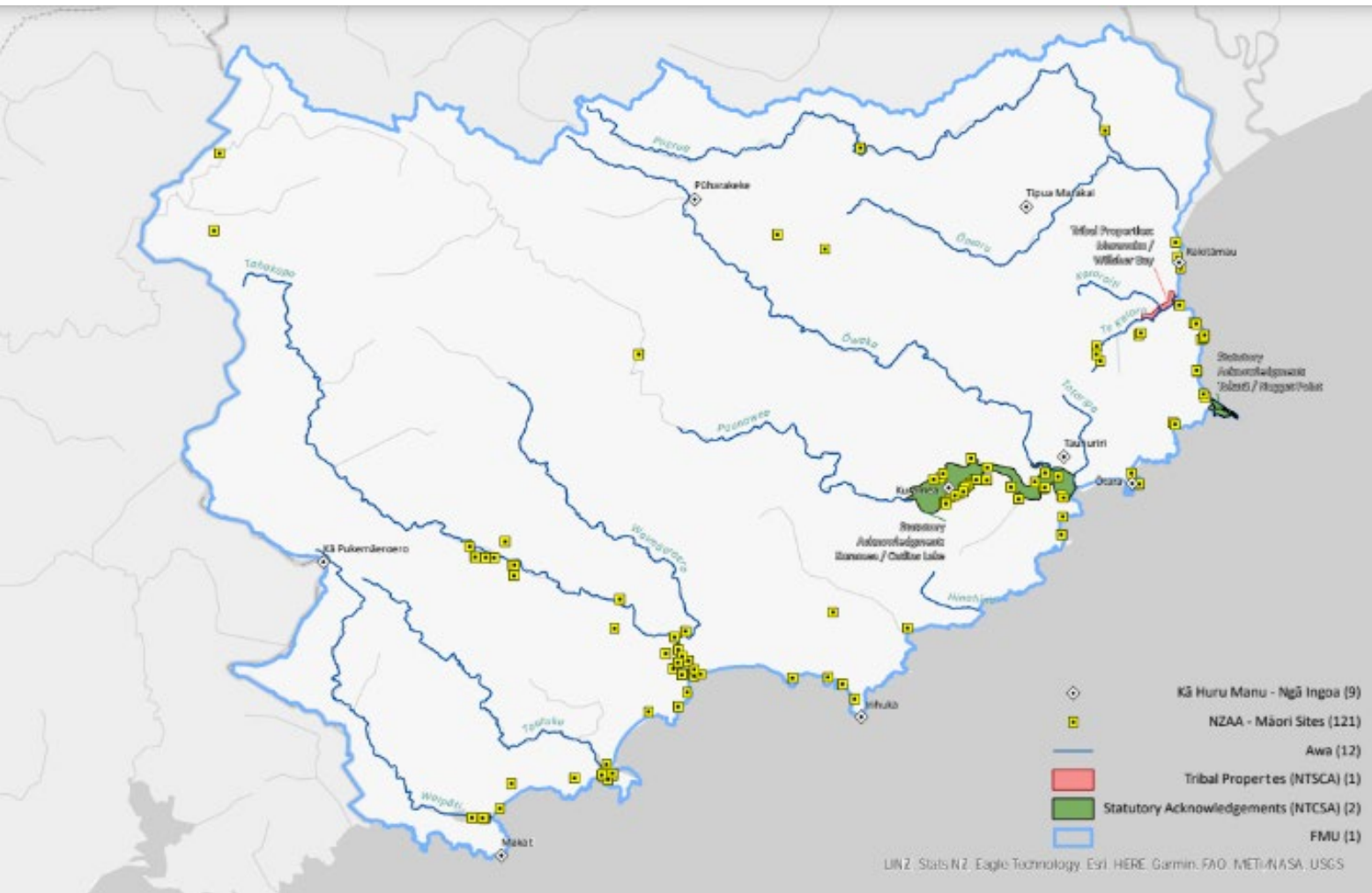


Water quantity

- ▶ Most water use in the Puerua River and Owaka River catchments
- ▶ Most takes are for rural supply and dairy sheds
- ▶ Low water demand



Cultural landscape



Mahinga Kai

Ability to fish at preferred sites, ki uta ki tai (catchment scale)

Food for whānau

Manaakitanga - Food for manuhiri

Ability to trade between whānau

Whakapapa & identity

Taonga species

Ability to use preferred harvest & storage methods

Safe & desirable to harvest

Available in sufficient numbers

Fish condition

Ability to support intergenerational knowledge transfer activities

Safe to eat

Access

Ecological integrity of habitat



Plan Background

- ▶ New land and water regional plan by December 2023
- ▶ In partnership with iwi & consulting with communities
- ▶ Some lakes & rivers in a good state, some degraded
- ▶ New plan will include rules and limits to protect water bodies and improve where degraded



What's key to this Plan

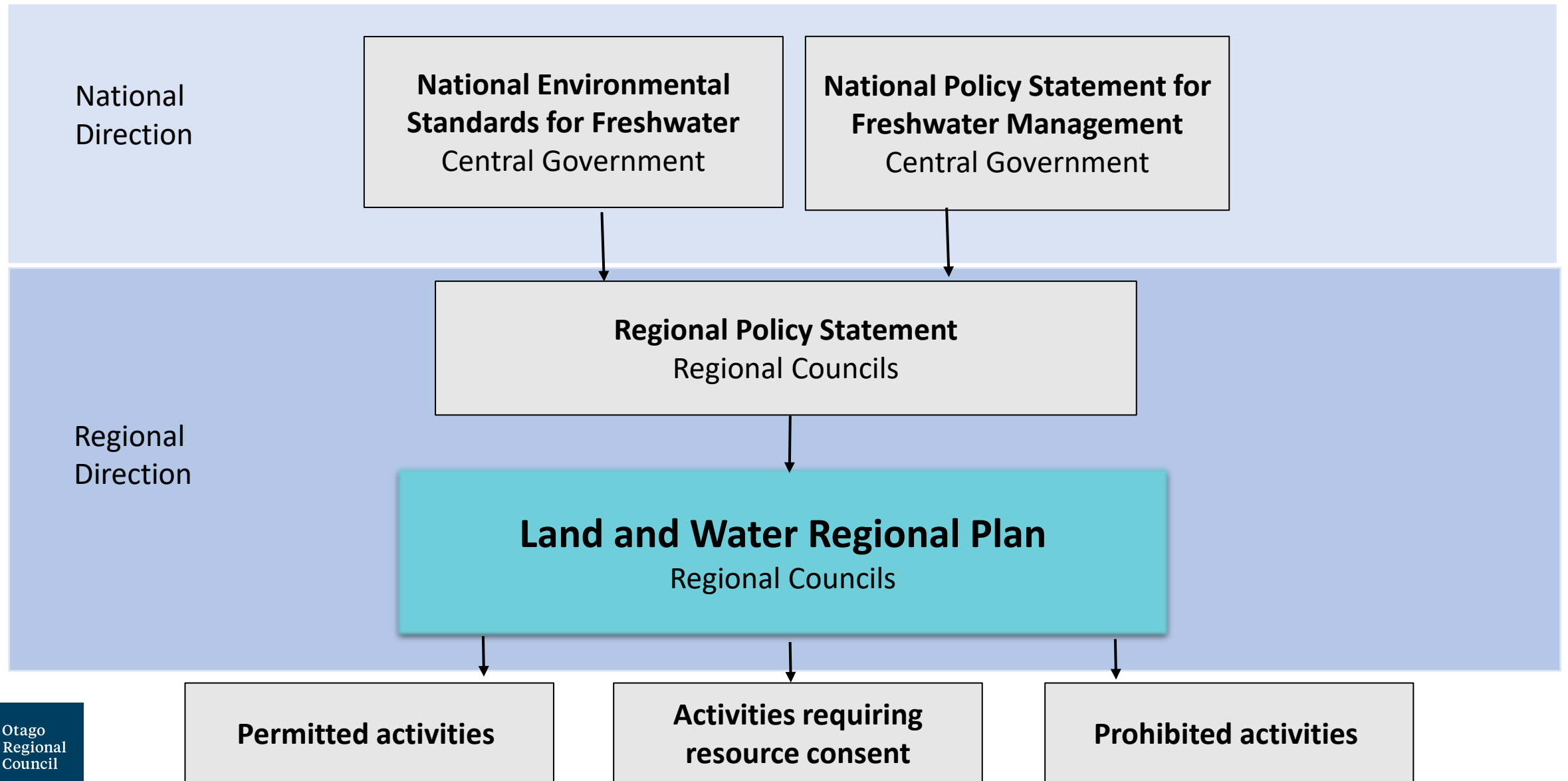
- ▶ Te Mana o te Wai (health of the water)
- ▶ Integrated management
- ▶ Holistic (ki uta ki tai/Mountains to sea)
- ▶ Future proof (climate change)
- ▶ Plans have life of 10 years

Everyone has a role to play in looking after water!

(people, community, councils, business owners, forestry,...)



Resource Management Act as our framework



Proposed Regional Policy Statement

Vision for the Catlins

By 2030 in the Catlins FMU:

- 1) fresh water is managed in accordance with *relevant Regional Policy Statement (LF-WAI)* objectives and policies,
- 2) the ongoing relationship of Kāi Tahu with wāhi tūpuna is sustained,
- 3) water bodies support thriving mahika kai and access of Kāi Tahu whānui to mahika kai,

Proposed Regional Policy Statement Vision for the Catlins

- 4) the high degree of naturalness and ecosystem connections between the forests, freshwater and coastal environment are preserved,
- 5) water bodies and their catchment areas support the health and well-being of coastal water, ecosystems and indigenous species, including downstream kaimoana, and
- 6) healthy, clear and clean water supports opportunities for recreation and sustainable food production for future generations.

Note: This proposed vision may be subject to change

Values for the Catlins

FIRST PRIORITY – health and well being of water bodies and freshwater ecosystems

Ecosystem health

Threatened and taoka species

Natural form and character

SECOND PRIORITY – health needs of people

Drinking water supply

THIRD PRIORITY – social, economic, and cultural well being

Animal drinking water

Food production

Commercial & industrial use

Recreation (human contact)

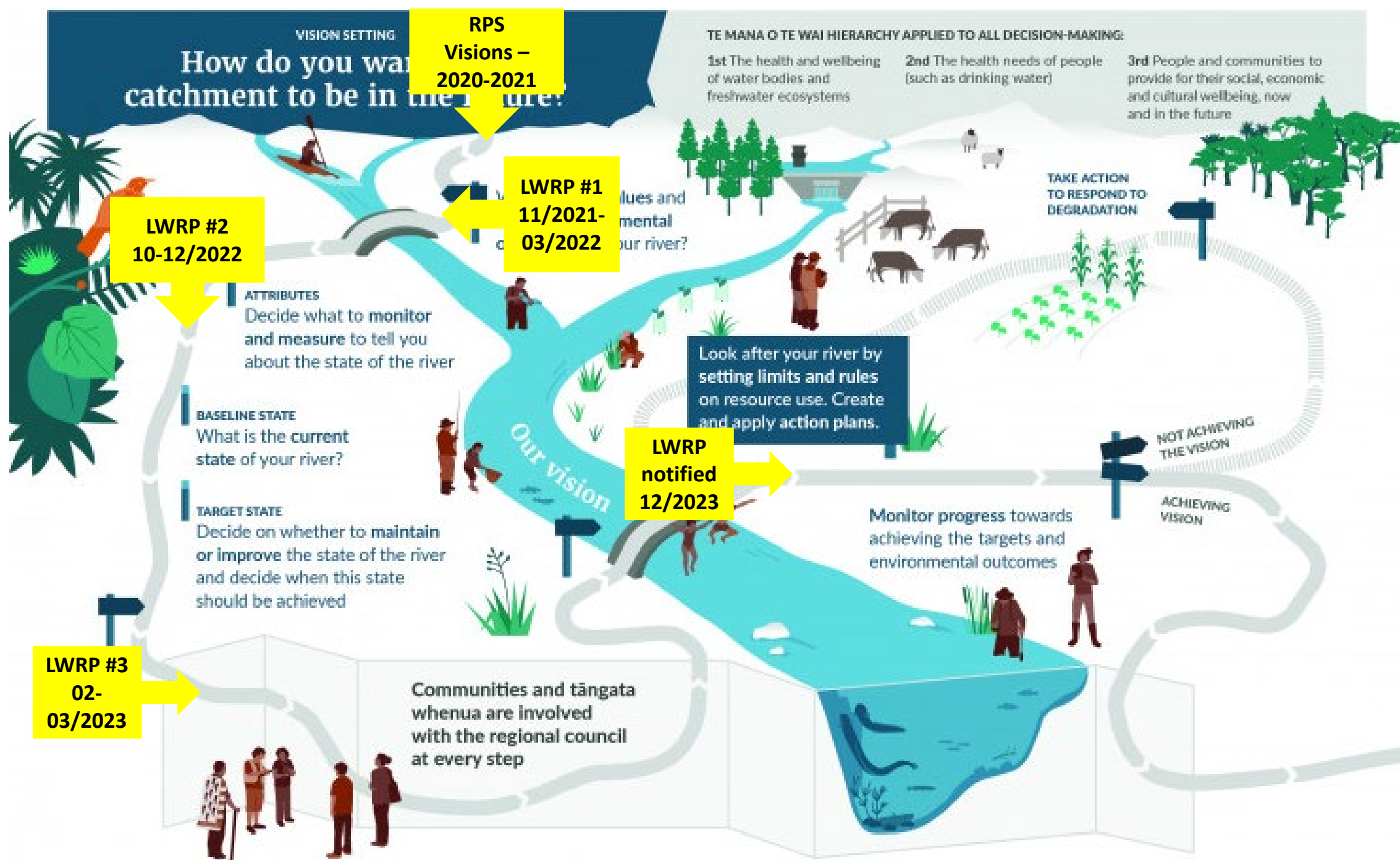
Fishing

Hydro

Wāhi tūpuna

Mahika kai

The process we're following



Environmental Outcomes



Environmental Outcomes

- ▶ Descriptions in the Land and Water Regional Plan of what a value should look like
- ▶ Help decide limits, rules and policies in the Land and Water Regional Plan
- ▶ Guide decision-making when processing consent applications
- ▶ **Goals for everyone to work towards**

Achieving the environmental outcomes

- ▶ Next we will identify indicators (also called attributes) to help us to monitor and measure
- ▶ There will also be end states for indicators (also called target attribute states) show us if we're achieving the outcomes
- ▶ End states often referred to as "Bands"
 - ▶ A-band : contributes to health & resilience of water, similar to natural conditions
 - ▶ B-band : slight impact on the health of the waterbody
 - ▶ C-band : moderate impact on the health of the waterbody
 - ▶ D-band : creates high risk of permanent shift to degraded state

Possible environmental outcomes & end states. E.g

Value	Possible environmental outcome	Indicator (attribute) How it's measured	Indicator state (attribute band) The end state we're aiming for	Current state – modelled % river segments complying with A, B, C band (confidence intervals shown where available)
Ecosystem health	Freshwater bodies within the Catlins FMU support healthy ecosystems with thriving habitats for a range of indigenous species, and the life stages of those species, that would be expected to occur naturally.	Macroinvertebrate community Index Nitrate (toxicity) 	B B 	A - 0 B - 40 C - 90 A - 95 (82-100) B - 100 (98-100) C - 100 (99-100)
Human contact	Water bodies within the Catlins FMU are clean and safe for human contact.	E.coli 	A ...	A - 9 (0-30) B – 26 (4-53) C – 39 (17-76) ...
....

Environmental outcomes - group discussion



Do you agree or disagree with them?



Why?



What other environmental outcomes (for other values) we should include?



Types of actions

Actions

- ▶ Things we can do to achieve environmental outcomes
- ▶ Can be developed into rules and controls in the plan or initiatives like education campaigns or integrated catchment planning – Catlins first cab off the ranks here
- ▶ Everyone has to play their part. Actions for everyone

E.g.:



Actions - group discussion



Are the possible actions we've identified practicable in your area?



What other actions should we consider?



What issues or unintended consequences do you see in any of these actions?



Closing

- ▶ Thanks for all your input today!
- ▶ You can give us more feedback for the next 4 weeks
- ▶ We're adding lots of great info on our website
- ▶ We'll be back in first quarter of 2023 to update you on this work



- ▶ Give us more feedback:
- ▶ Online: www.orc.govt.nz/plans-policies-reports/land-and-water-regional-plan
- ▶ Hard copy
- ▶ Check out our website for more information

Scan to get to the land and water regional plan website and the online feedback form

Or visit our website:

www.orc.govt.nz/plans-policies-reports/land-and-water-regional-plan

