

# GREEN ISLAND RESOURCE RECOVERY PARK PRECINCT

GRAPHIC SUPPLEMENT

FEBRUARY 2024





# Green Island Resource Recovery Park Precinct



## CONTENTS

---

### MAPS / FIGURES

---

- FIGURE 1: Landscape Context and Zoning Plans
- FIGURE 2: Site Context Plan
- FIGURE 3: Topography Plan
- FIGURE 4: Site Appraisal and Site Context Photographs
- FIGURE 5: General Arrangement Plan with Mitigation
- FIGURE 6: Resource Recovery Park Precinct Illustrative Cross Sections
- FIGURE 6A: Resource Recovery Park Precinct Illustrative Cross Sections
- FIGURE 7: Vegetation to be Removed
- FIGURE 8: Visual Simulation View Point Locations

### SITE APPRAISAL PHOTOGRAPHS

---

Site Appraisal Photographs A - D

### SITE CONTEXT PHOTOGRAPHS

---

- Site Context Photography E - F
- Site Context Photography G - H
- Site Context Photography I - J
- Site Context Photography K - L
- Site Context Photograph M

### VISUAL SIMULATIONS

---

- VS1a South Paddock
- VS1a South Paddock with Mitigation Planting 5 Years
- VS1a South Paddock with Mitigation Planting 10 Years
- VS1b Clariton Avenue
- VS1b Clariton Ave with Mitigation Planting 5 Years
- VS1b Clariton Ave with Mitigation Planting 10 Years
- VS2 Trudi Place
- VS2 Trudi Place with Mitigation Planting 5 Years
- VS2 Trudi Place with Mitigation Planting 10 Years
- VS3 Allen Road
- VS3 Allen Road with Mitigation Planting 5 Years
- VS3 Allen Road with Mitigation Planting 10 Years
- VS4 Walton Park Avenue
- VS4 Walton Park Avenue with Mitigation Planting 5 Years
- VS4 Walton Park Avenue with Mitigation Planting 10 Years
- VS5 Holyport Close
- VS5 Holyport Close with Mitigation Planting 5 Years
- VS5 Holyport Close with Mitigation Planting 10 Years
- VS6 Thompson Street
- VS6 Thompson Street with Mitigation Planting 5 Years
- VS6 Thompson Street with Mitigation Planting 10 Years



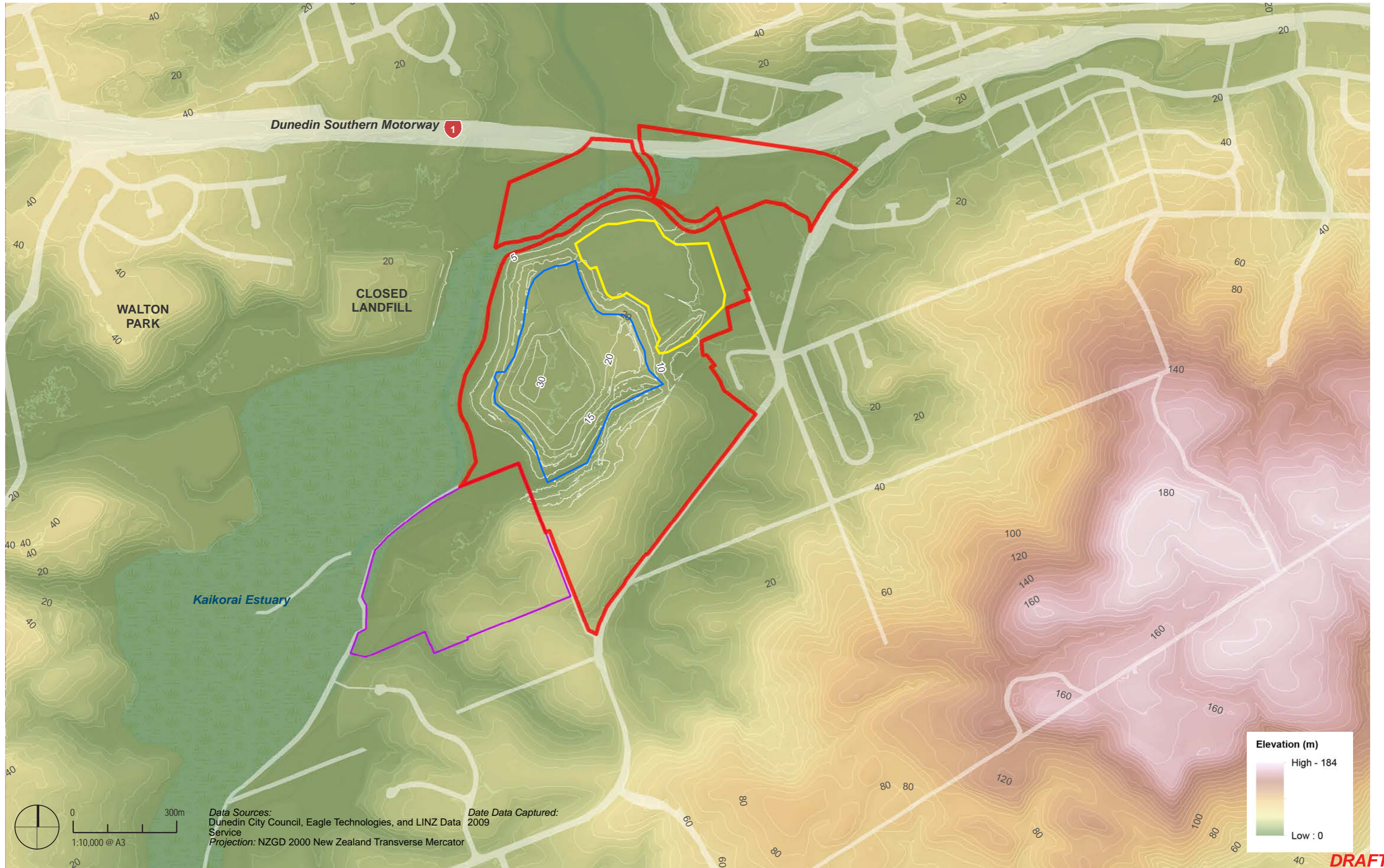


Eagle Technology, Land Information New Zealand, GEBCO, Community maps contributors









**DRAFT**

**LEGEND**

- Resource Recovery Park Precinct Area
- Landfill Designation
- Landfill Extent

**GREEN ISLAND RESOURCE RECOVERY PARK PRECINCT**

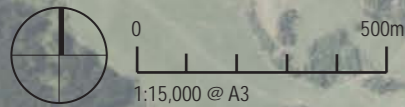
**Topography Plan**

Date: 16 February 2024 | Revision: 0

Plan prepared for Dunedin City Council by Boffa Miskell Limited

Project Manager: Rachael.Eaton@boffamiskell.co.nz | Drawn: SYo | Checked: SMC










Data Sources:  
 Dunedin City Council, Eagle Technologies, and LINZ Data Service  
 Projection: NZGD 2000 New Zealand Transverse Mercator

Eagle Technology, Land Information New Zealand, GEBCO, Community maps contributors

**DRAFT**

**LEGEND**

-  Resource Recovery Park Precinct Area
-  Landfill Designation
-  Landfill Extent
-  Site Appraisal Photographs A-C
-  Site Context Photographs D-L

**GREEN ISLAND RESOURCE RECOVERY PARK PRECINCT**  
 Site Appraisal and Site Context Photographs

Date: 16 February 2024 | Revision: 1  
 Plan prepared for Dunedin City Council by Boffa Miskell Limited  
 Project Manager: Rachael.Eaton@boffamiskell.co.nz | Drawn: SCh | Checked: SMC





**Site Appraisal Photograph A:** Photograph taken from the existing landfill area, looking in a northeasterly direction.



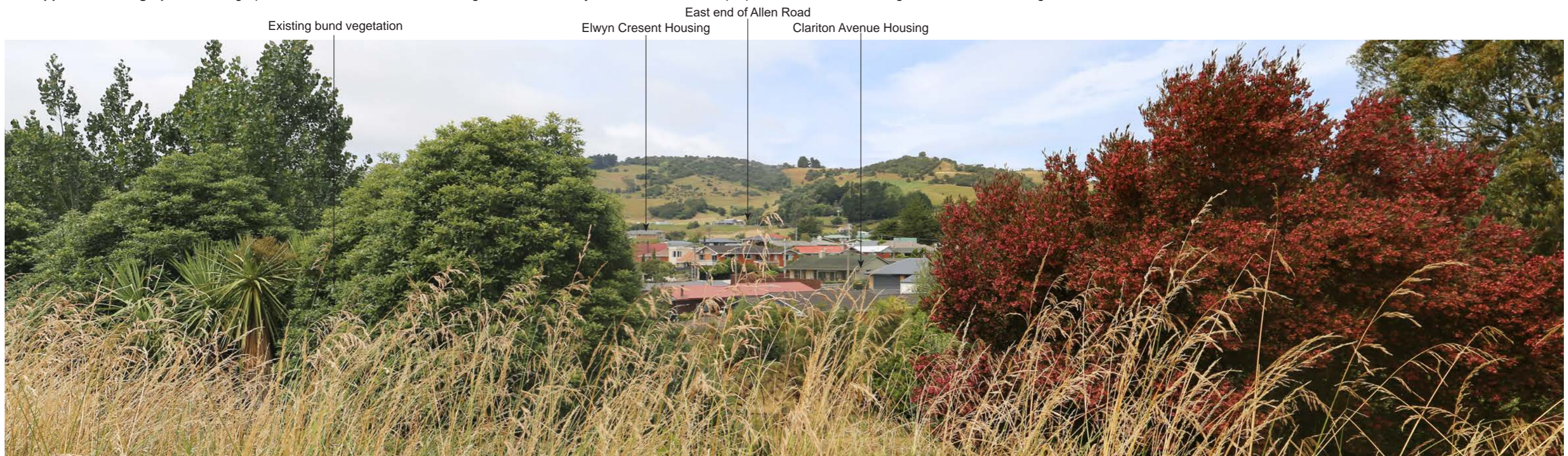
**Site Appraisal Photograph B:** Photograph taken from the access road of the Site, looking in a southeasterly direction across the proposed locations for the Materials Recovery Facility and Bulk Waste Transfer Buildings, and worker facilities.

**DRAFT**





**Site Appraisal Photograph C:** Photograph taken from within the Site, looking in a northwesterly direction towards the proposed location for the Organics Reveal Building.



**Site Appraisal Photograph D:** Photograph taken from the southern bund within the Site, looking in a southeasterly direction towards the Clariton Avenue neighbourhood.



Saddle Hill/  
Pukemakamaka

Approximate Resource Recovery Precinct



Site Context Photograph E: Photograph taken from Weir Street, approximately 470 metres southeast of the closest proposed building, looking in a northwesterly direction.

Existing vegetation at the  
northeastern boundary of the Site

Saddle Hill/  
Pukemakamaka

Existing industrial structure off Brighton Road



Site Context Photograph F: Photograph taken from Burgess Street, approximately 550 metres northeast of the closest proposed building, looking in a westerly direction.





**Site Context Photograph G:** Photograph taken from Church Hill Road, approximately 1.1 kilometres east of the Landfill Operational Boundary, looking in a westerly direction.



**Site Context Photograph H:** Photograph taken from Green Island Bush Road, approximately 1 kilometre southeast of the Landfill Operational Boundary, looking in a northwesterly direction.





Site Context Photograph I: Photograph taken from Old Brighton Road, approximately 1.5 kilometres southwest of the Landfill Operational Boundary, looking in a northeasterly direction.



Site Context Photograph J: Photograph taken from Blanc Avenue, approximately 685 metres northwest of the Landfill Operational Boundary, looking in a southeasterly direction.



Approximate location of the Site



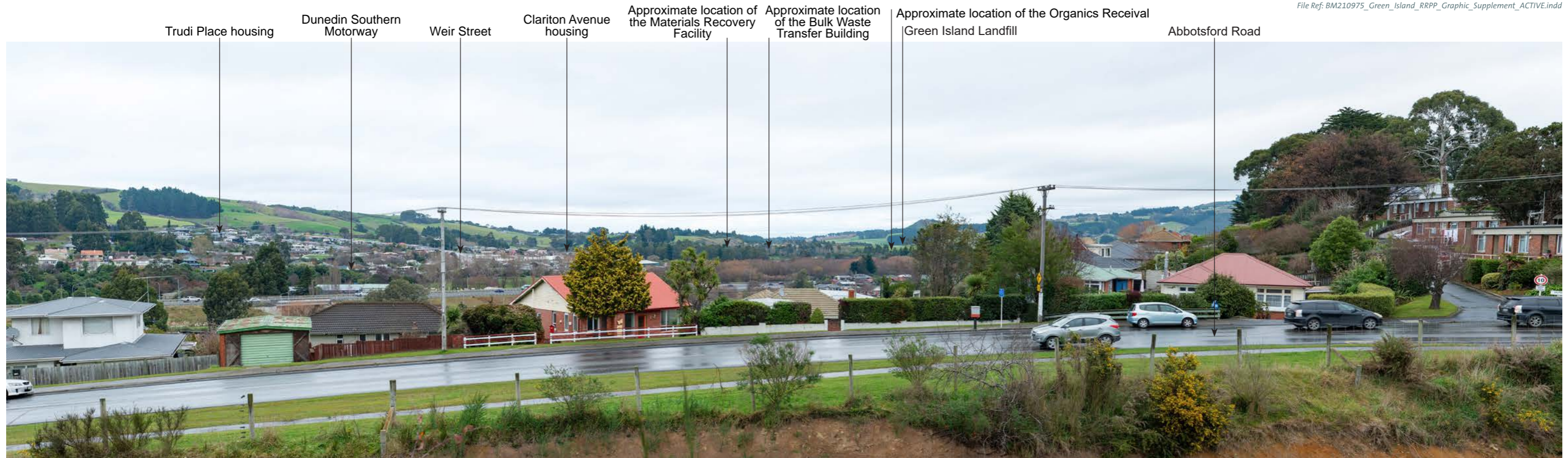
Site Context GoPro Image K: Photograph taken from Dunedin Southern Motorway approximately 395 metres northwest of the Landfill Operational Boundary, looking in a southeasterly direction.

The Site largely obscured by trees



Site Context Photograph L: Photograph taken from Pottinger Street, approximately 370 metres north of the Landfill Operational Boundary, looking in a southwesterly direction.





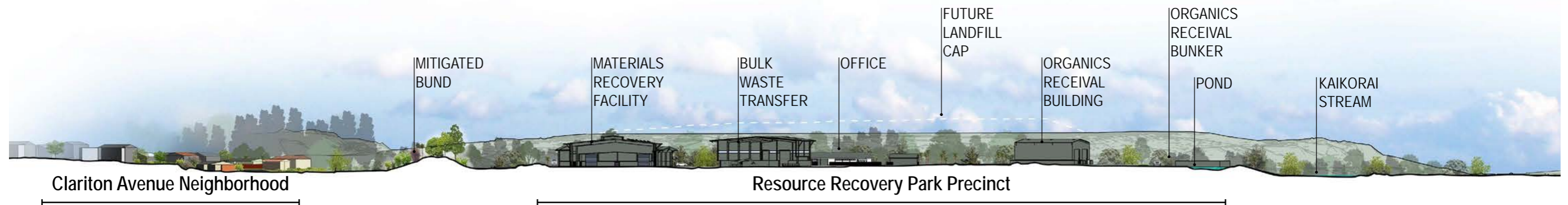
**Site Context Photograph M:** Photograph taken from Paterson Street, approximately 820 metres northeast of the Landfill Operational Boundary, looking in a southwesterly direction.



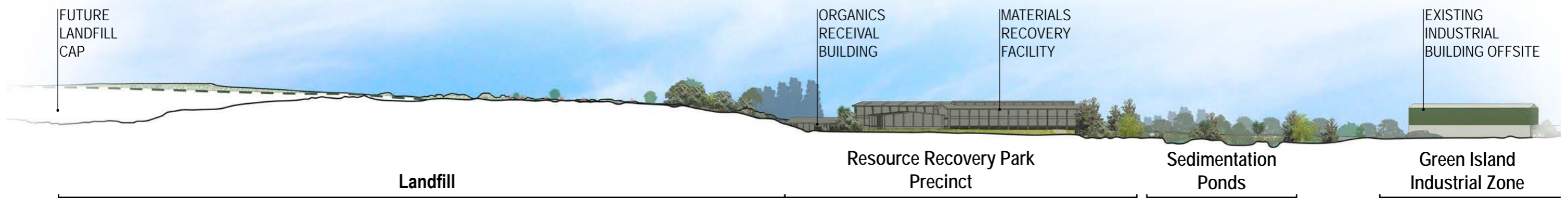




## SECTION 1: RRP RELATIONSHIP WITH CLARITON AVENUE NEIGHBORHOOD



## SECTION 2: RRP RELATIONSHIP WITH NEIGHBOURING INDUSTRIAL ZONE



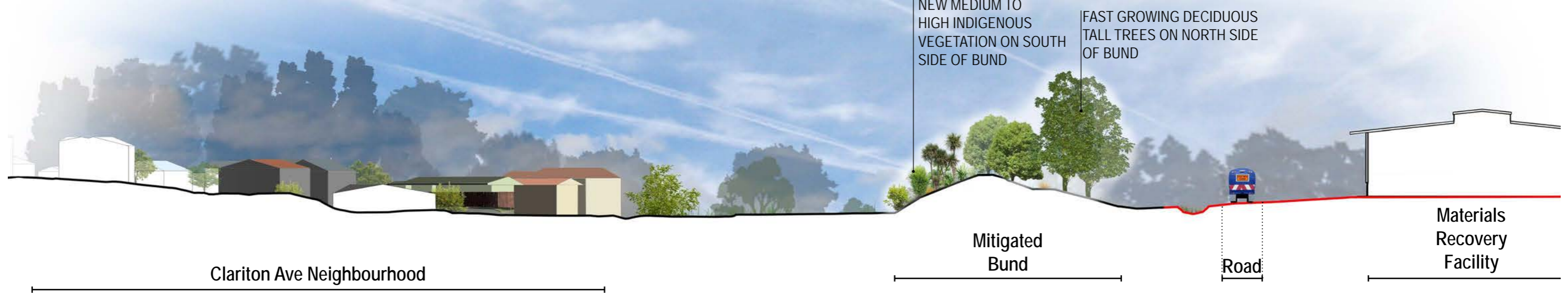
Note: Sections for illustrative purposes only



### SECTION 3A: EXISTING SOUTH BUND SHOWN WITH PROPOSED MATERIALS RECOVERY FACILITY



### SECTION 3B: BUND WITH MITIGATION PLANTING, SHOWN WITH PROPOSED MATERIALS RECOVERY FACILITY



Note: Sections for illustrative purposes only

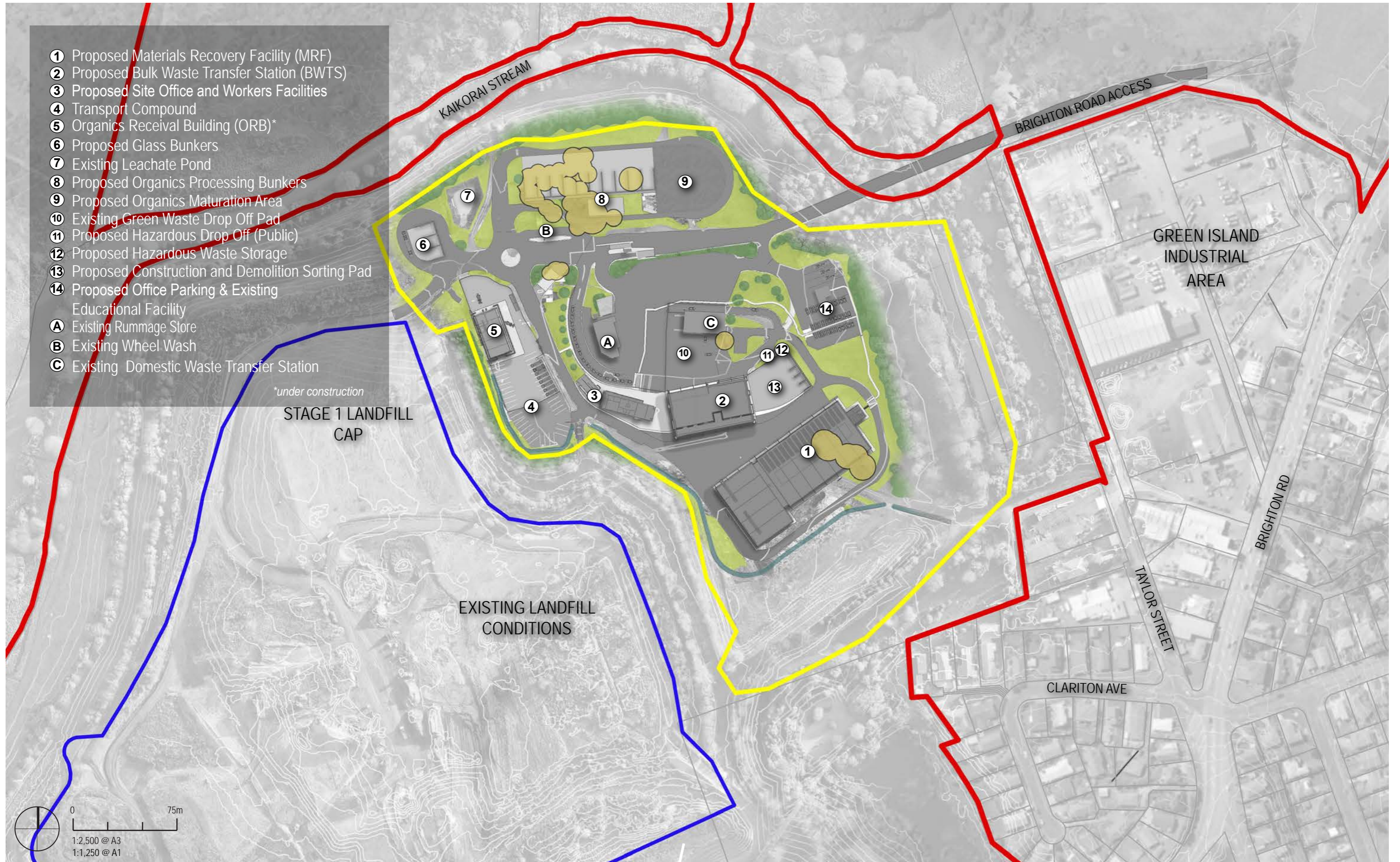


# SECTION 4: ORGANICS RECEIVAL BUNKERS AND KAIKORAI STREAM



Note: Sections for illustrative purposes only





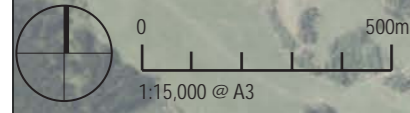
LEGEND

- Resource Recovery Park Precinct Area
- Landfill Designation Area
- Landfill Extent (final cap)

- Trees to be Removed
- Trees to be Retained
- Woody Vegetation to be Retained
- Grassy Areas to be Retained/Enhanced






GREEN ISLAND RESOURCE RECOVERY PARK PRECINCT  
Existing Vegetation and Vegetation to be Removed





Data Sources:  
 Dunedin City Council, Eagle Technologies, and LINZ Data Service  
 Projection: NZGD 2000 New Zealand Transverse Mercator

Eagle Technology, Land Information New Zealand, GEBCO, Community maps contributors

LEGEND	
	Resource Recovery Park Precinct Area
	Landfill Designation
	Landfill Extent
	Visual Simulation Location
	Visual Simulation Location (on Private Property)





*Existing view from boundary of south paddock*



*Proposed view of Material Recovery Facility Building from boundary of south paddock with no mitigation planting*

— Existing Top of Bund Outline  
— Existing Landfill Cap Outline

— Proposed Materials Recovery Facility Roofline Outline





Existing view from boundary of south paddock



Proposed view of Material Recovery Facility Building from boundary of south paddock with mitigation planting

— Existing Top of Bund Outline  
 — Existing Landfill Cap Outline

— Proposed Materials Recovery Facility Roofline Outline





*Existing view from boundary of south paddock*



*Proposed view of Material Recovery Facility Building from boundary of south paddock with mitigation planting*

— Existing Top of Bund Outline  
 — Existing Landfill Cap Outline

— Proposed Materials Recovery Facility Roofline Outline





Existing view from Clariton Ave



Proposed view from Clariton Ave with no mitigation planting

— Existing Top of Bund Outline  
— Existing Landfill Cap Outline  
— Proposed Materials Recovery Facility Roofline Outline





Existing view from Clariton Ave



Proposed view from Clariton Ave with mitigation planting

— Existing Top of Bund Outline  
— Existing Landfill Cap Outline  
 Proposed Materials Recovery Facility Roofline Outline





Existing view from Clariton Ave



Proposed view from Clariton Ave with mitigation planting

— Existing Top of Bund Outline  
 — Existing Landfill Cap Outline

— Proposed Materials Recovery Facility Roofline Outline





Existing view from Trudi Place



Proposed view from Trudi Place with no mitigation planting

— Existing Top of Bund Outline  
— Existing Landfill Cap Outline  
— Proposed Materials Recovery Facility Roofline Outline





Existing view from Trudi Place



Proposed view from Trudi Place with mitigation planting

— Existing Top of Bund Outline  
— Existing Landfill Cap Outline  
— Proposed Materials Recovery Facility Roofline Outline





Existing view from Trudi Place



Proposed view from Trudi Place with mitigation planting

Existing Top of Bund Outline  
Existing Landfill Cap Outline

Proposed Materials Recovery Facility Roofline Outline





Existing view from Allen Road



— Existing Top of Bund Outline    
 — Proposed Materials Recovery Facility Roofline Outline  
— Existing Landfill Cap Outline

Proposed view from Allen Road with no mitigation planting





Existing view from Allen Road



— Existing Top of Bund Outline    
 — Proposed Materials Recovery Facility Roofline Outline  
— Existing Landfill Cap Outline

Proposed view from Allen Road with mitigation planting





Existing view from Allen Road



Proposed view from Allen Road with mitigation planting

— Existing Top of Bund Outline    
 — Proposed Materials Recovery Facility Roofline Outline  
— Existing Landfill Cap Outline





*Existing view from Walton Park Ave*



*Proposed view from Walton Park Ave with no mitigation planting*





*Existing view from Walton Park Ave*



*Proposed view from Walton Park Ave with mitigation planting*





*Existing view from Walton Park Ave*



*Proposed view from Walton Park Ave with mitigation planting*





*Existing view from Holyport Close*



*Proposed view from Holyport Close with no mitigation planting*





*Existing view from Holyport Close*



*Proposed view from Holyport Close Ave with mitigation planting*





*Existing view from Holyport Close*



*Proposed view from Holyport Close Ave with mitigation planting*





*Existing view from Thomson Street*



*Proposed view from Thomson Street with no mitigation planting*





*Existing view from Thomson Street*



*Proposed view from Thomson Street with mitigation planting*





*Existing view from Thomson Street*



*Proposed view from Thomson Street with mitigation planting*





#### About Boffa Miskell

Boffa Miskell is a leading New Zealand professional services consultancy with offices in Whangarei, Auckland, Hamilton, Tauranga, Wellington, Nelson, Christchurch, Dunedin, and Queenstown. We work with a wide range of local and international private and public sector clients in the areas of planning, urban design, landscape architecture, landscape planning, ecology, biosecurity, cultural heritage, graphics and mapping. Over the past four decades we have built a reputation for professionalism, innovation and excellence. During this time we have been associated with a significant number of projects that have shaped New Zealand's environment.

---

[www.boffamiskell.co.nz](http://www.boffamiskell.co.nz)

Whangarei	Auckland	Hamilton	Tauranga	Wellington	Nelson	Christchurch	Queenstown	Dunedin
09 358 2526	09 358 2526	07 960 0006	07 571 5511	04 385 9315	03 548 8551	03 366 8891	03 441 1670	03 470 0460